

ELISA Kit for Follicle Stimulating Hormone (FSH)

Catalog No: tcue8373



Available Sizes

Size: 96T



Specifications

Research Area:

Endocrinology; Reproductive science; Genetic science; Hormone metabolism;

Species Reactivity:

Capra hircus; Caprine (Goat)

Sample Type:

serum, plasma and other biological fluids

Sensitivity:

The minimum detectable dose of this kit is typically less than 0.83ng/mL

Detection Range:

2.22-180ng/mL

Assay Time:

2h

Detection Method:

Enzyme-linked immunosorbent assay for Antigen Detection.

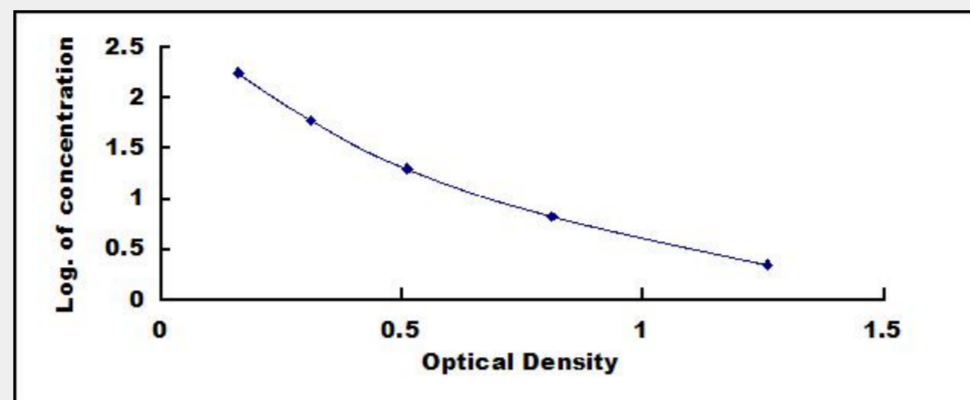
Tested Application:

ELISA

Test Principle

This assay employs the competitive inhibition enzyme immunoassay technique. A monoclonal antibody specific to Follicle Stimulating Hormone (FSH) has been pre-coated onto a microplate. A competitive inhibition reaction is launched between biotin labeled Follicle Stimulating Hormone (FSH) and unlabeled Follicle Stimulating Hormone (FSH) (Standards or samples) with the pre-coated antibody specific to Follicle Stimulating Hormone (FSH). After incubation the unbound conjugate is washed off. Next, avidin conjugated to Horseradish Peroxidase (HRP) is added to each microplate well and incubated. The amount of bound HRP conjugate is

reverse proportional to the concentration of Follicle Stimulating Hormone (FSH) in the sample. After addition of the substrate solution, the intensity of color developed is reverse proportional to the concentration of Follicle Stimulating Hormone (FSH) in the sample.



All products are for RESEARCH USE ONLY. Not for diagnostic & therapeutic purposes!