

# ELISA Kit for Brain Derived Neurotrophic Factor (BDNF)

Catalog No: **tcue7702**



## Available Sizes

---

**Size:** 96T



## Specifications

---

**Research Area:**

Cytokine; Infection immunity; Neuro science;

---

**Species Reactivity:**

Homo sapiens (Human), Mus musculus (Mouse), Rattus norvegicus (Rat), Oryctolagus cuniculus (Rabbit), Capra hircus; Caprine (Goat), Equus caballus; Equine (Horse)

---

**Sample Type:**

serum, plasma, tissue homogenates, cell lysates, cell culture supernates and other biological fluids

---

**Sensitivity:**

The minimum detectable dose of this kit is typically less than 12.6pg/mL

---

**Detection Range:**

31.2-2000pg/mL

---

**Assay Time:**

3h

---

**Detection Method:**

Enzyme-linked immunosorbent assay for Antigen Detection.

---

**Tested Application:**

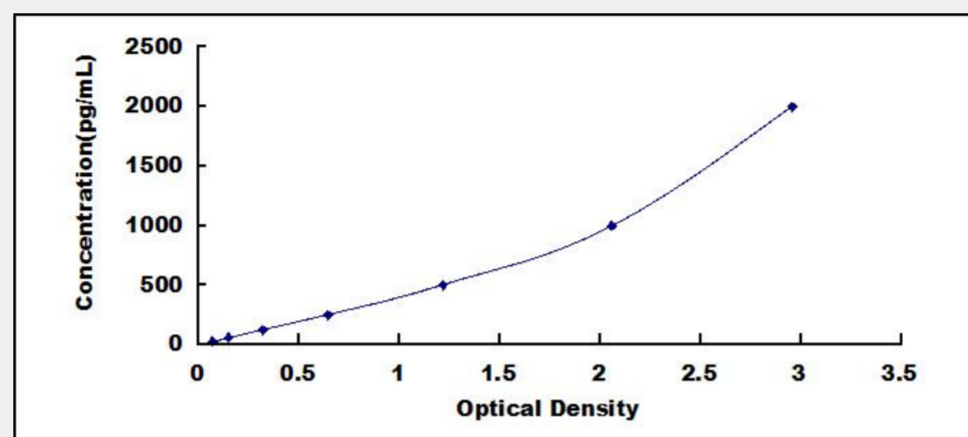
ELISA

---

## Test Principle

The test principle applied in this kit is Sandwich enzyme immunoassay. The microtiter plate provided in this kit has been pre-coated

with an antibody specific to Brain Derived Neurotrophic Factor (BDNF). Standards or samples are then added to the appropriate microtiter plate wells with a biotin-conjugated antibody specific to Brain Derived Neurotrophic Factor (BDNF). Next, Avidin conjugated to Horseradish Peroxidase (HRP) is added to each microplate well and incubated. After TMB substrate solution is added, only those wells that contain Brain Derived Neurotrophic Factor (BDNF), biotin-conjugated antibody and enzyme-conjugated Avidin will exhibit a change in color. The enzyme-substrate reaction is terminated by the addition of sulphuric acid solution and the color change is measured spectrophotometrically at a wavelength of  $450\text{nm} \pm 10\text{nm}$ . The concentration of Brain Derived Neurotrophic Factor (BDNF) in the samples is then determined by comparing the O.D. of the samples to the standard curve.



All products are for RESEARCH USE ONLY. Not for diagnostic & therapeutic purposes!