

ELISA Kit for Glucagon Like Peptide 1 (GLP1)

Catalog No: tcue7277



Available Sizes

Size: 96T



Specifications

Research Area:

Endocrinology; Cardiovascular biology; Hepatology; Hormone metabolism;

Species Reactivity:

Homo sapiens (Human), Mus musculus (Mouse), Rattus norvegicus (Rat), Oryctolagus cuniculus (Rabbit), Canis familiaris; Canine (Dog), Bos taurus; Bovine (Cattle)

Sample Type:

serum, plasma and other biological fluids

Sensitivity:

The minimum detectable dose of this kit is typically less than 4.26pg/mL

Detection Range:

12.35-1000pg/mL

Assay Time:

2h

Detection Method:

Enzyme-linked immunosorbent assay for Antigen Detection.

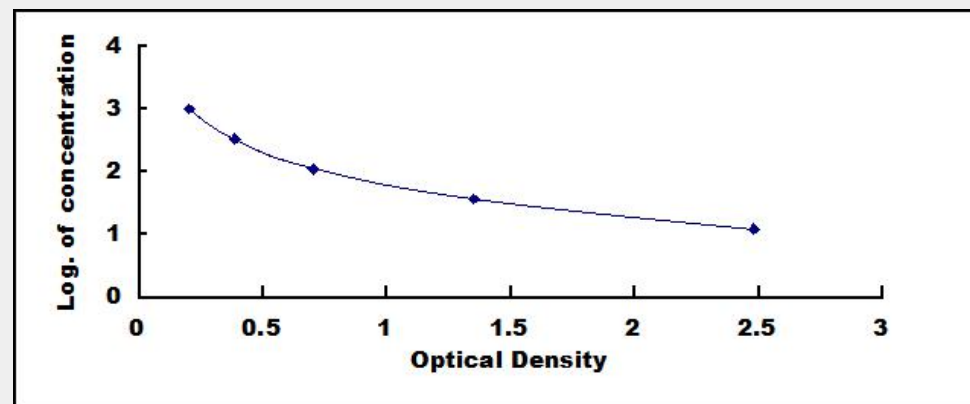
Tested Application:

ELISA

Test Principle

This assay employs the competitive inhibition enzyme immunoassay technique. A monoclonal antibody specific to Glucagon Like Peptide 1 (GLP1) has been pre-coated onto a microplate. A competitive inhibition reaction is launched between biotin labeled Glucagon Like Peptide 1 (GLP1) and unlabeled Glucagon Like Peptide 1 (GLP1) (Standards or samples) with the pre-coated antibody

specific to Glucagon Like Peptide 1 (GLP1). After incubation the unbound conjugate is washed off. Next, avidin conjugated to Horseradish Peroxidase (HRP) is added to each microplate well and incubated. The amount of bound HRP conjugate is reverse proportional to the concentration of Glucagon Like Peptide 1 (GLP1) in the sample. After addition of the substrate solution, the intensity of color developed is reverse proportional to the concentration of Glucagon Like Peptide 1 (GLP1) in the sample.



All products are for RESEARCH USE ONLY. Not for diagnostic & therapeutic purposes!