

# ELISA Kit for Hepcidin (Hepc)

Catalog No: tcue7095



## Available Sizes

---

**Size:** 96T



## Specifications

---

**Research Area:**

Metabolic pathway;Endocrinology;Hematology;Genetic science;

---

**Species Reactivity:**

Sus scrofa; Porcine (Pig)

---

**Sample Type:**

Serum, plasma, tissue homogenates, cell lysates, cell culture supernates and other biological fluids

---

**Sensitivity:**

The minimum detectable dose of this kit is typically less than 283.51pg/mL

---

**Detection Range:**

740.74-60000pg/mL

---

**Assay Time:**

2h

---

**Detection Method:**

Enzyme-linked immunosorbent assay for Antigen Detection.

---

**Tested Application:**

ELISA

---

**SwissProt:**

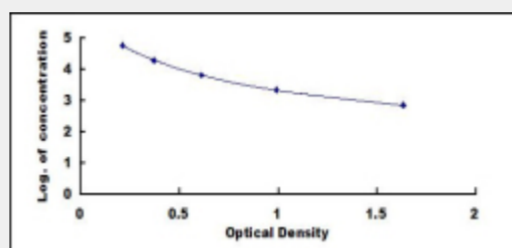
Q8MJ80

---

## Test Principle

This assay employs the competitive inhibition enzyme immunoassay technique. A monoclonal antibody specific to Hepcidin (Hepc)

has been pre-coated onto a microplate. A competitive inhibition reaction is launched between biotin labeled Hepcidin (Hepc) and unlabeled Hepcidin (Hepc) (Standards or samples) with the pre-coated antibody specific to Hepcidin (Hepc). After incubation the unbound conjugate is washed off. Next, avidin conjugated to Horseradish Peroxidase (HRP) is added to each microplate well and incubated. The amount of bound HRP conjugate is reverse proportional to the concentration of Hepcidin (Hepc) in the sample. After addition of the substrate solution, the intensity of color developed is reverse proportional to the concentration of Hepcidin (Hepc) in the sample.



All products are for RESEARCH USE ONLY. Not for diagnostic & therapeutic purposes!