

ELISA Kit for Luteinizing Hormone (LH)

Catalog No: tcue6408



Available Sizes

Size: 96T



Specifications

Research Area:

Endocrinology; Reproductive science; Hormone metabolism;

Species Reactivity:

Rhesus monkey (Simian)

Sample Type:

Serum, plasma and other biological fluids.

Sensitivity:

The minimum detectable dose of this kit is typically less than 172.5pg/mL

Detection Range:

370.37-30000pg/mL

Assay Time:

2h

Detection Method:

Enzyme-linked immunosorbent assay for Antigen Detection.

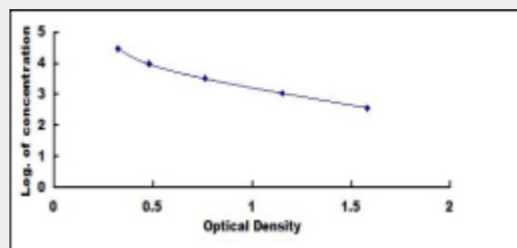
Tested Application:

ELISA

Test Principle

This assay employs the competitive inhibition enzyme immunoassay technique. A monoclonal antibody specific to Luteinizing Hormone (LH) has been pre-coated onto a microplate. A competitive inhibition reaction is launched between biotin labeled Luteinizing Hormone (LH) and unlabeled Luteinizing Hormone (LH) (Standards or samples) with the pre-coated antibody specific to Luteinizing Hormone (LH). After incubation the unbound conjugate is washed off. Next, avidin conjugated to Horseradish Peroxidase (HRP) is added to each microplate well and incubated. The amount of bound HRP conjugate is reverse proportional to the

concentration of Luteinizing Hormone (LH) in the sample. After addition of the substrate solution, the intensity of color developed is reverse proportional to the concentration of Luteinizing Hormone (LH) in the sample.



All products are for RESEARCH USE ONLY. Not for diagnostic & therapeutic purposes!