

ELISA Kit for Albumin (ALB)

Catalog No: tcue5578



Available Sizes

Size: 96T



Specifications

Research Area:

Tumor immunity; Infection immunity; Hematology; Hepatology; Nutrition metabolism;

Species Reactivity:

Cavia (Guinea pig)

Sample Type:

Serum, plasma and other biological fluids.

Sensitivity:

The minimum detectable dose of this kit is typically less than 0.43ug/mL

Detection Range:

1.23-100ug/mL

Assay Time:

2h

Detection Method:

Enzyme-linked immunosorbent assay for Antigen Detection.

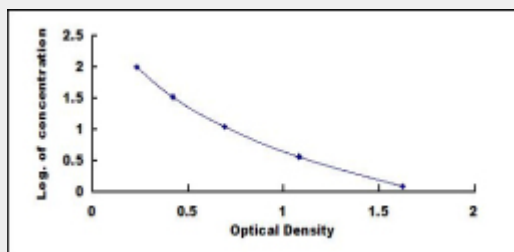
Tested Application:

ELISA

Test Principle

This assay employs the competitive inhibition enzyme immunoassay technique. A monoclonal antibody specific to Albumin (ALB) has been pre-coated onto a microplate. A competitive inhibition reaction is launched between biotin labeled Albumin (ALB) and unlabeled Albumin (ALB) (Standards or samples) with the pre-coated antibody specific to Albumin (ALB). After incubation the unbound conjugate is washed off. Next, avidin conjugated to Horseradish Peroxidase (HRP) is added to each microplate well and incubated. The amount of bound HRP conjugate is reverse proportional to the concentration of Albumin (ALB) in the sample. After addition of

the substrate solution, the intensity of color developed is reverse proportional to the concentration of Albumin (ALB) in the sample.



All products are for RESEARCH USE ONLY. Not for diagnostic & therapeutic purposes!