

Polyclonal Antibody to High Molecular Weight Kininogen (HMWK)

Catalog No: tcua4274



Available Sizes

Size: 20ul

Size: 100ul

Size: 200ul



Specifications

Application:

WB; IHC; ICC; IP.

Species Reactivity:

Rattus norvegicus (Rat)

Host Species:

Rabbit

Conjugation:

Unconjugated

Clonality:

Polyclonal

Form:

Liquid

Storage Buffer:

PBS, pH7.4, containing 0.01% SKL, 1mM DTT, 5% Trehalose and Proclin300.

Recommended Dilution:

Western blotting: 0.2-2µg/mL;1:250-2500

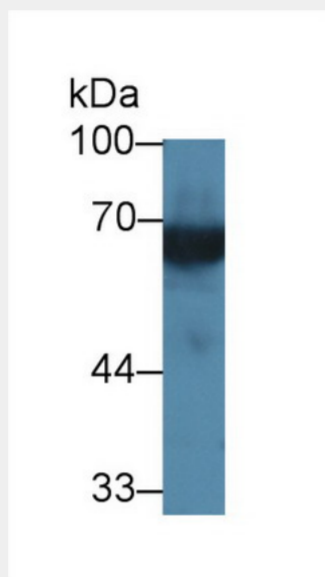
Immunohistochemistry: 5-20µg/mL;1:25-100

Immunocytochemistry: 5-20µg/mL;1:25-100

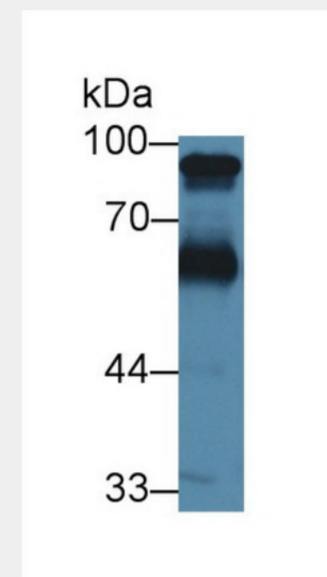
Optimal working dil

Alternative Names:

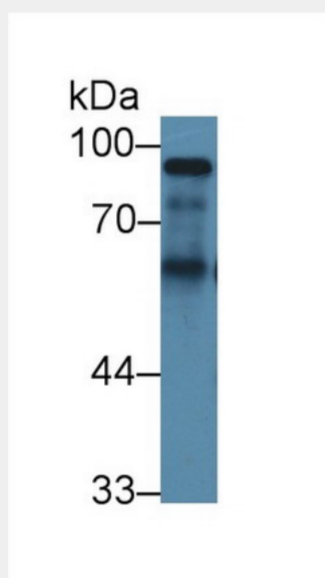
Williams-Fitzgerald-Flaujeac Factor; Fitzgerald Factor; HMWK-Kallikrein Factor



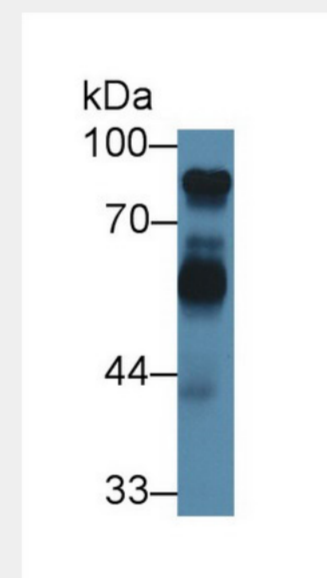
Western Blot; Sample: Rat Kidney lysate; Primary Ab: 1 μ g/ml Rabbit Anti-Rat HMWK Antibody Second Ab: 0.2 μ g/mL HRP-Linked Caprine Anti-Rabbit IgG Polyclonal Antibody (Catalog: SAA544Rb19)



Western Blot; Sample: Rat Heart lysate; Primary Ab: 1 μ g/ml Rabbit Anti-Rat HMWK Antibody Second Ab: 0.2 μ g/mL HRP-Linked Caprine Anti-Rabbit IgG Polyclonal Antibody Catalog: SAA544Rb19)



Western Blot; Sample: Rat Liver lysate; Primary Ab: 1 μ g/ml Rabbit Anti-Rat HMWK Antibody Second Ab: 0.2 μ g/mL HRP-Linked Caprine Anti-Rabbit IgG Polyclonal Antibody Catalog: SAA544Rb19)



Western Blot; Sample: Rat Placenta lysate; Primary Ab: 1 μ g/ml Rabbit Anti-Rat HMWK Antibody Second Ab: 0.2 μ g/mL HRP-Linked Caprine Anti-Rabbit IgG Polyclonal Antibody Catalog: SAA544Rb19)

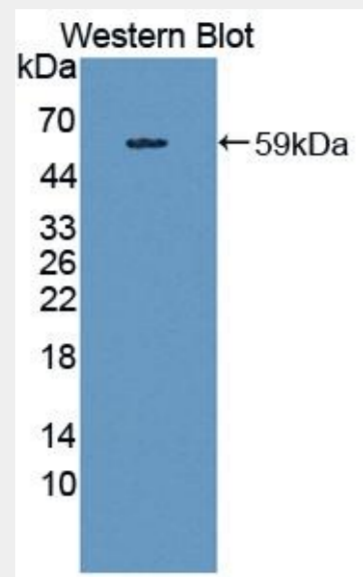
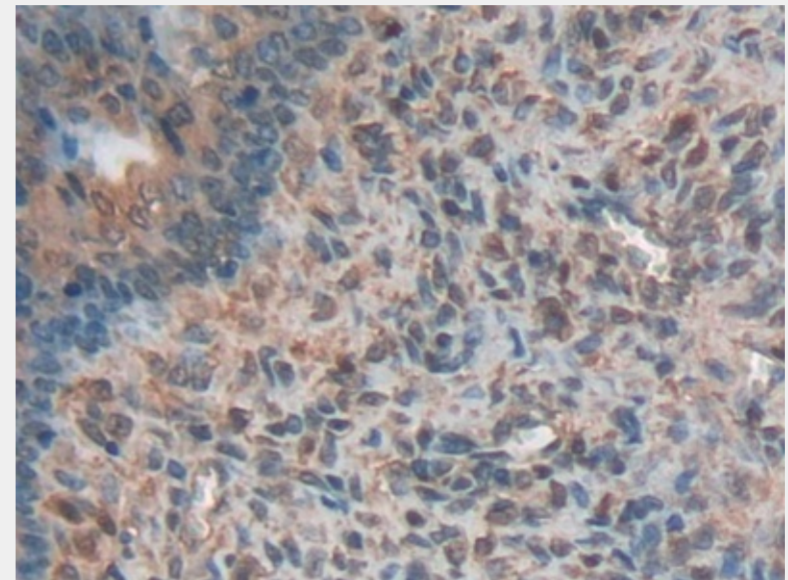
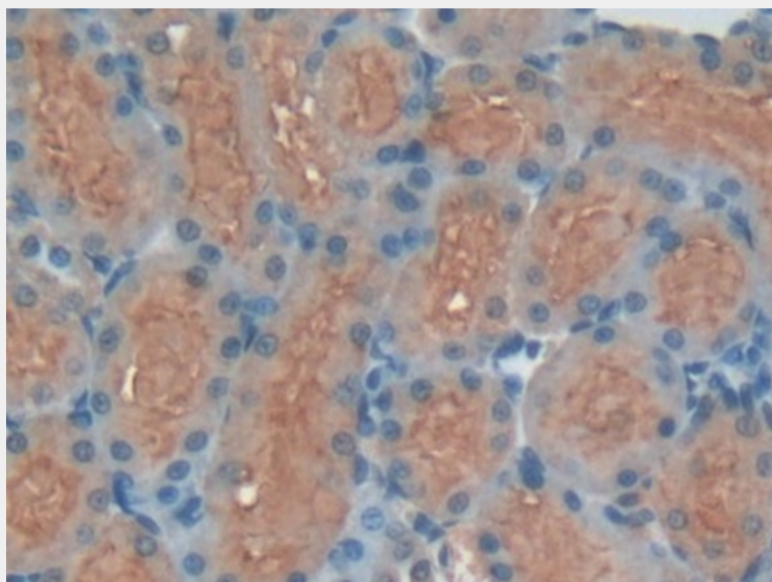


Figure. Western Blot; Sample: Recombinant protein.)



DAB staining on IHC-P;
Samples: Rat Ovary Tissue)



Used in DAB staining on formalin fixed paraffin- embedded stomach tissue)

All products are for RESEARCH USE ONLY. Not for diagnostic & therapeutic purposes!