

# CLIA Kit for Immunoglobulin G (IgG)

Catalog No: tcue3957



## Available Sizes

**Size:** 96T



## Specifications

### Research Area:

Infection immunity; Immune molecule; Hematology;

### Species Reactivity:

Cavia (Guinea pig )

### Sample Type:

Serum, plasma, tissue homogenates, cell lysates, cell culture supernates and other biological fluids

### Sensitivity:

The minimum detectable dose of this kit is typically less than 271ng/mL

### Detection Range:

781-200,000ng/mL

### Assay Time:

2h

### Detection Method:

Chemiluminescent immunoassay for Antigen Detection.

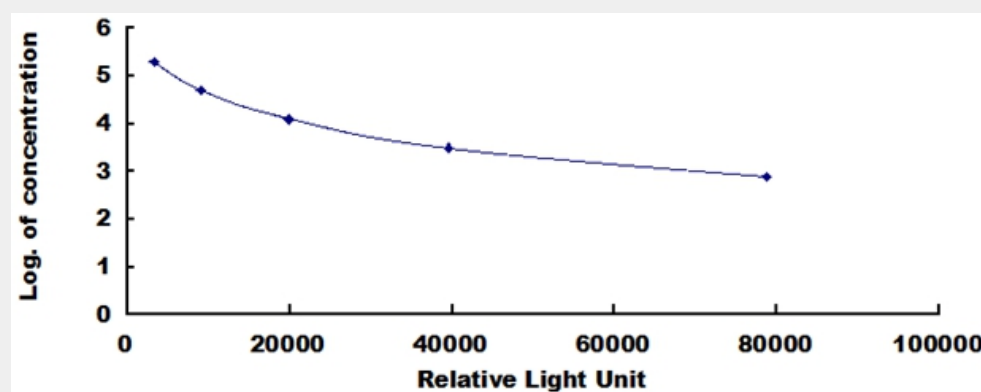
### Tested Application:

ELISA

## Test Principle

The microplate provided in this kit has been pre-coated with a monoclonal antibody specific to Immunoglobulin G (IgG). A competitive inhibition reaction is launched between biotin labeled Immunoglobulin G (IgG) and unlabeled Immunoglobulin G (IgG) (Standards or samples) with the pre-coated antibody specific to Immunoglobulin G (IgG). After incubation the unbound conjugate is washed off. Next, avidin conjugated to Horseradish Peroxidase (HRP) is added to each microplate well and incubated. The amount of bound HRP conjugate is reverse proportional to the concentration of Immunoglobulin G (IgG) in the sample. Then the mixture of

substrate A and B is added to generate glow light emission kinetics. Upon plate development, the intensity of the emitted light is reverse proportional to the Immunoglobulin G (IgG) level in the sample or standard.



All products are for RESEARCH USE ONLY. Not for diagnostic & therapeutic purposes!