

# ELISA Kit for Complement Component 1, Q Subcomponent Like Protein 1 (C1qL1) Catalog No: tcue3366



## Available Sizes

**Size:** 96T



## Specifications

**Research Area:**

Immune molecule;

**Species Reactivity:**

Homo sapiens (Human)

**Sample Type:**

Serum, plasma and other biological fluids.

**Sensitivity:**

The minimum detectable dose of this kit is typically less than 0.053ng/mL

**Detection Range:**

0.156-10ng/mL

**Assay Time:**

3h

**Detection Method:**

Enzyme-linked immunosorbent assay for Antigen Detection.

**Tested Application:**

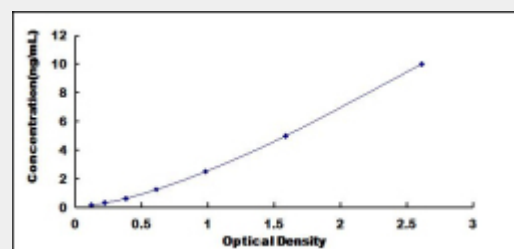
ELISA

**SwissProt:**

O75973

## Test Principle

The test principle applied in this kit is Sandwich enzyme immunoassay. The microtiter plate provided in this kit has been pre-coated with an antibody specific to Complement Component 1, Q Subcomponent Like Protein 1 (C1qL1). Standards or samples are then added to the appropriate microtiter plate wells with a biotin-conjugated antibody specific to Complement Component 1, Q Subcomponent Like Protein 1 (C1qL1). Next, Avidin conjugated to Horseradish Peroxidase (HRP) is added to each microplate well and incubated. After TMB substrate solution is added, only those wells that contain Complement Component 1, Q Subcomponent Like Protein 1 (C1qL1), biotin-conjugated antibody and enzyme-conjugated Avidin will exhibit a change in color. The enzyme-substrate reaction is terminated by the addition of sulphuric acid solution and the color change is measured spectrophotometrically at a wavelength of  $450\text{nm} \pm 10\text{nm}$ . The concentration of Complement Component 1, Q Subcomponent Like Protein 1 (C1qL1) in the samples is then determined by comparing the O.D. of the samples to the standard curve.



All products are for RESEARCH USE ONLY. Not for diagnostic & therapeutic purposes!