

ELISA Kit for Metallothionein 1M (MT1M)

Catalog No: tcue3319



Available Sizes

Size: 96T



Specifications

Research Area:

Tumor immunity;

Species Reactivity:

Homo sapiens (Human)

Sample Type:

Serum, plasma and other biological fluids.

Sensitivity:

The minimum detectable dose of this kit is typically less than 0.97ng/mL

Detection Range:

2.47-200ng/mL

Assay Time:

2h

Detection Method:

Enzyme-linked immunosorbent assay for Antigen Detection.

Tested Application:

ELISA

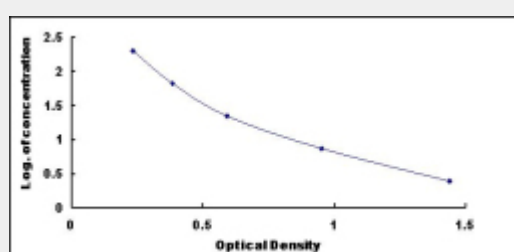
SwissProt:

Q8N339

Test Principle

This assay employs the competitive inhibition enzyme immunoassay technique. A monoclonal antibody specific to Metallothionein

1M (MT1M) has been pre-coated onto a microplate. A competitive inhibition reaction is launched between biotin labeled Metallothionein 1M (MT1M) and unlabeled Metallothionein 1M (MT1M) (Standards or samples) with the pre-coated antibody specific to Metallothionein 1M (MT1M). After incubation the unbound conjugate is washed off. Next, avidin conjugated to Horseradish Peroxidase (HRP) is added to each microplate well and incubated. The amount of bound HRP conjugate is reverse proportional to the concentration of Metallothionein 1M (MT1M) in the sample. After addition of the substrate solution, the intensity of color developed is reverse proportional to the concentration of Metallothionein 1M (MT1M) in the sample.



All products are for RESEARCH USE ONLY. Not for diagnostic & therapeutic purposes!