

# ELISA Kit for Arachidonate Lipoxygenase 3 (ALOXE3)

Catalog No: tcue3314



## Available Sizes

**Size:** 96T



## Specifications

**Research Area:**

Enzyme & Kinase;

**Species Reactivity:**

Homo sapiens (Human)

**Sample Type:**

Tissue homogenates and other biological fluids.

**Sensitivity:**

The minimum detectable dose of this kit is typically less than 0.114ng/mL

**Detection Range:**

0.312-20ng/mL

**Assay Time:**

3h

**Detection Method:**

Enzyme-linked immunosorbent assay for Antigen Detection.

**Tested Application:**

ELISA

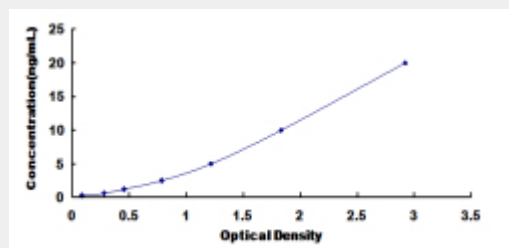
**SwissProt:**

Q9BYJ1

## Test Principle

The test principle applied in this kit is Sandwich enzyme immunoassay. The microtiter plate provided in this kit has been pre-coated

with an antibody specific to Arachidonate Lipoxygenase 3 (ALOXE3). Standards or samples are then added to the appropriate microtiter plate wells with a biotin-conjugated antibody specific to Arachidonate Lipoxygenase 3 (ALOXE3). Next, Avidin conjugated to Horseradish Peroxidase (HRP) is added to each microplate well and incubated. After TMB substrate solution is added, only those wells that contain Arachidonate Lipoxygenase 3 (ALOXE3), biotin-conjugated antibody and enzyme-conjugated Avidin will exhibit a change in color. The enzyme-substrate reaction is terminated by the addition of sulphuric acid solution and the color change is measured spectrophotometrically at a wavelength of  $450\text{nm} \pm 10\text{nm}$ . The concentration of Arachidonate Lipoxygenase 3 (ALOXE3) in the samples is then determined by comparing the O.D. of the samples to the standard curve.



All products are for RESEARCH USE ONLY. Not for diagnostic & therapeutic purposes!