

# ELISA Kit for Beta-Site APP Cleaving Enzyme 1 (bACE1)

## Catalog No: tcue3282



### Available Sizes

**Size:** 96T



### Specifications

**Research Area:**

Neuro science;

**Species Reactivity:**

Mus musculus (Mouse)

**Sample Type:**

serum, plasma, tissue homogenates, cerebrospinal fluid and other biological fluids

**Sensitivity:**

The minimum detectable dose of this kit is typically less than 12.1pg/mL

**Detection Range:**

31.2-2,000pg/mL

**Assay Time:**

3h

**Detection Method:**

Enzyme-linked immunosorbent assay for Antigen Detection.

**Tested Application:**

ELISA

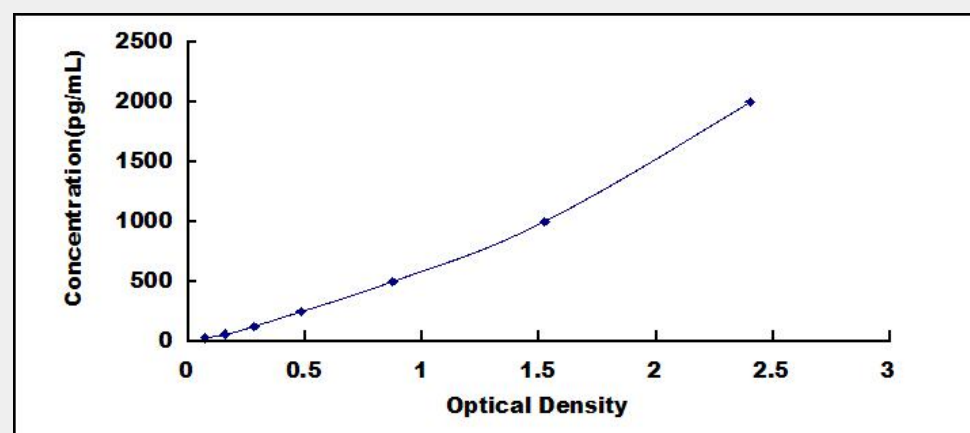
**SwissProt:**

P56818

### Test Principle

The test principle applied in this kit is Sandwich enzyme immunoassay. The microtiter plate provided in this kit has been pre-coated

with an antibody specific to Beta-Site APP Cleaving Enzyme 1 (bACE1). Standards or samples are then added to the appropriate microtiter plate wells with a biotin-conjugated antibody specific to Beta-Site APP Cleaving Enzyme 1 (bACE1). Next, Avidin conjugated to Horseradish Peroxidase (HRP) is added to each microplate well and incubated. After TMB substrate solution is added, only those wells that contain Beta-Site APP Cleaving Enzyme 1 (bACE1), biotin-conjugated antibody and enzyme-conjugated Avidin will exhibit a change in color. The enzyme-substrate reaction is terminated by the addition of sulphuric acid solution and the color change is measured spectrophotometrically at a wavelength of  $450\text{nm} \pm 10\text{nm}$ . The concentration of Beta-Site APP Cleaving Enzyme 1 (bACE1) in the samples is then determined by comparing the O.D. of the samples to the standard curve.



All products are for RESEARCH USE ONLY. Not for diagnostic & therapeutic purposes!