

ELISA Kit for Solute Carrier Family 1, Member 5 (SLC1A5)

Catalog No: tcue3237



Available Sizes

Size: 96T



Specifications

Research Area:

Signal transduction;

Species Reactivity:

Homo sapiens (Human)

Sample Type:

Tissue homogenates, cell lysates and other biological fluids

Sensitivity:

The minimum detectable dose of this kit is typically less than 0.124ng/mL

Detection Range:

0.312-20ng/mL

Assay Time:

3h

Detection Method:

Enzyme-linked immunosorbent assay for Antigen Detection.

Tested Application:

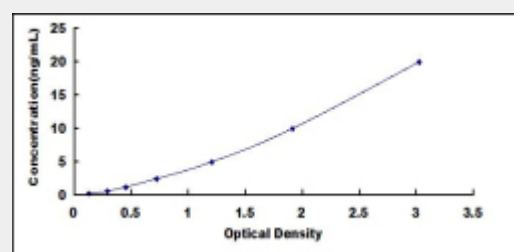
ELISA

SwissProt:

Q15758

Test Principle

The test principle applied in this kit is Sandwich enzyme immunoassay. The microtiter plate provided in this kit has been pre-coated with an antibody specific to Solute Carrier Family 1, Member 5 (SLC1A5). Standards or samples are then added to the appropriate microtiter plate wells with a biotin-conjugated antibody specific to Solute Carrier Family 1, Member 5 (SLC1A5). Next, Avidin conjugated to Horseradish Peroxidase (HRP) is added to each microplate well and incubated. After TMB substrate solution is added, only those wells that contain Solute Carrier Family 1, Member 5 (SLC1A5), biotin-conjugated antibody and enzyme-conjugated Avidin will exhibit a change in color. The enzyme-substrate reaction is terminated by the addition of sulphuric acid solution and the color change is measured spectrophotometrically at a wavelength of $450\text{nm} \pm 10\text{nm}$. The concentration of Solute Carrier Family 1, Member 5 (SLC1A5) in the samples is then determined by comparing the O.D. of the samples to the standard curve.



All products are for RESEARCH USE ONLY. Not for diagnostic & therapeutic purposes!