

ELISA Kit for Cathepsin D (CTSD)

Catalog No: tcue3130



Available Sizes

Size: 96T



Specifications

Research Area:

Tumor immunity;

Species Reactivity:

Bos taurus; Bovine (Cattle)

Sample Type:

Serum, plasma and other biological fluids.

Sensitivity:

The minimum detectable dose of this kit is typically less than 0.88ng/mL

Detection Range:

2.47-200ng/mL

Assay Time:

2h

Detection Method:

Enzyme-linked immunosorbent assay for Antigen Detection.

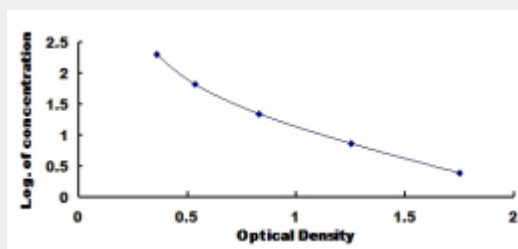
Tested Application:

ELISA

Test Principle

This assay employs the competitive inhibition enzyme immunoassay technique. A monoclonal antibody specific to Cathepsin D (CTSD) has been pre-coated onto a microplate. A competitive inhibition reaction is launched between biotin labeled Cathepsin D (CTSD) and unlabeled Cathepsin D (CTSD) (Standards or samples) with the pre-coated antibody specific to Cathepsin D (CTSD). After incubation the unbound conjugate is washed off. Next, avidin conjugated to Horseradish Peroxidase (HRP) is added to each microplate well and incubated. The amount of bound HRP conjugate is reverse proportional to the concentration of Cathepsin D

(CTSD) in the sample. After addition of the substrate solution, the intensity of color developed is reverse proportional to the concentration of Cathepsin D (CTSD) in the sample.



All products are for RESEARCH USE ONLY. Not for diagnostic & therapeutic purposes!