

ELISA Kit for Kallikrein 14 (KLK14)

Catalog No: tcue3044



Available Sizes

Size: 96T



Specifications

Research Area:

Enzyme & Kinase;

Species Reactivity:

Homo sapiens (Human)

Sample Type:

Serum, plasma, tissue homogenates and other biological fluids.

Sensitivity:

The minimum detectable dose of this kit is typically less than 43.2pg/mL

Detection Range:

123.46-10000pg/mL

Assay Time:

2h

Detection Method:

Enzyme-linked immunosorbent assay for Antigen Detection.

Tested Application:

ELISA

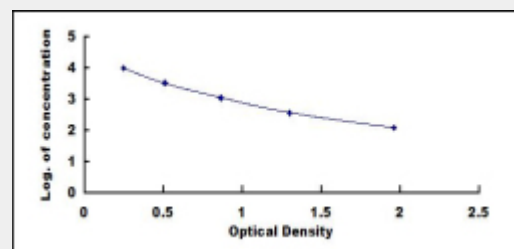
SwissProt:

Q9P0G3

Test Principle

This assay employs the competitive inhibition enzyme immunoassay technique. A monoclonal antibody specific to Kallikrein 14

(KLK14) has been pre-coated onto a microplate. A competitive inhibition reaction is launched between biotin labeled Kallikrein 14 (KLK14) and unlabeled Kallikrein 14 (KLK14) (Standards or samples) with the pre-coated antibody specific to Kallikrein 14 (KLK14). After incubation the unbound conjugate is washed off. Next, avidin conjugated to Horseradish Peroxidase (HRP) is added to each microplate well and incubated. The amount of bound HRP conjugate is reverse proportional to the concentration of Kallikrein 14 (KLK14) in the sample. After addition of the substrate solution, the intensity of color developed is reverse proportional to the concentration of Kallikrein 14 (KLK14) in the sample.



All products are for RESEARCH USE ONLY. Not for diagnostic & therapeutic purposes!