

# ELISA Kit for Macrophage Scavenger Receptor 1 (MSR1)

Catalog No: tcue2933



## Available Sizes

Size: 96T



## Specifications

### Research Area:

Signal transduction;Metabolic pathway;Infection immunity;

### Species Reactivity:

Homo sapiens (Human)

### Sample Type:

tissue homogenates, cell lysates and other biological fluids

### Sensitivity:

The minimum detectable dose of this kit is typically less than 0.112ng/mL

### Detection Range:

0.312-20ng/mL

### Assay Time:

3h

### Detection Method:

Enzyme-linked immunosorbent assay for Antigen Detection.

### Tested Application:

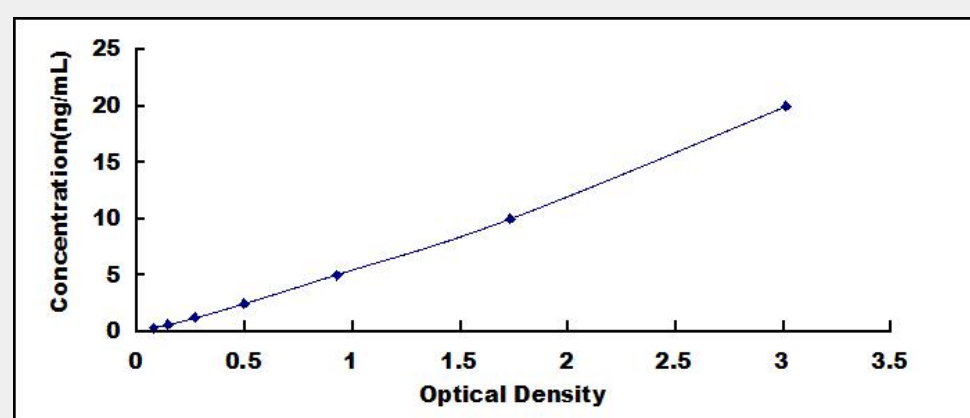
ELISA

### SwissProt:

P21757

## Test Principle

The test principle applied in this kit is Sandwich enzyme immunoassay. The microtiter plate provided in this kit has been pre-coated with an antibody specific to Macrophage Scavenger Receptor 1 (MSR1). Standards or samples are then added to the appropriate microtiter plate wells with a biotin-conjugated antibody specific to Macrophage Scavenger Receptor 1 (MSR1). Next, Avidin conjugated to Horseradish Peroxidase (HRP) is added to each microplate well and incubated. After TMB substrate solution is added, only those wells that contain Macrophage Scavenger Receptor 1 (MSR1), biotin-conjugated antibody and enzyme-conjugated Avidin will exhibit a change in color. The enzyme-substrate reaction is terminated by the addition of sulphuric acid solution and the color change is measured spectrophotometrically at a wavelength of  $450\text{nm} \pm 10\text{nm}$ . The concentration of Macrophage Scavenger Receptor 1 (MSR1) in the samples is then determined by comparing the O.D. of the samples to the standard curve.



All products are for RESEARCH USE ONLY. Not for diagnostic & therapeutic purposes!