

# ELISA Kit for Serine / Arginine Rich Splicing Factor 2 (SRSF2)

Catalog No: tcue2895



## Available Sizes

Size: 96T



## Specifications

### Research Area:

Signal transduction;

### Species Reactivity:

Homo sapiens (Human)

### Sample Type:

Tissue homogenates and other biological fluids.

### Sensitivity:

The minimum detectable dose of this kit is typically less than 0.054ng/mL

### Detection Range:

0.156-10ng/mL

### Assay Time:

3h

### Detection Method:

Enzyme-linked immunosorbent assay for Antigen Detection.

### Tested Application:

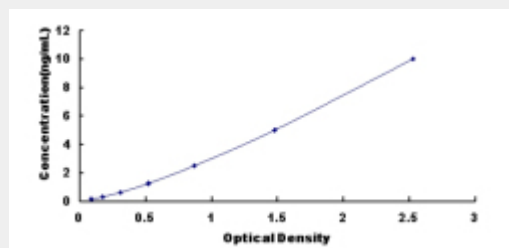
ELISA

### SwissProt:

Q01130

## Test Principle

The test principle applied in this kit is Sandwich enzyme immunoassay. The microtiter plate provided in this kit has been pre-coated with an antibody specific to Serine/Arginine Rich Splicing Factor 2 (SRSF2). Standards or samples are then added to the appropriate microtiter plate wells with a biotin-conjugated antibody specific to Serine/Arginine Rich Splicing Factor 2 (SRSF2). Next, Avidin conjugated to Horseradish Peroxidase (HRP) is added to each microplate well and incubated. After TMB substrate solution is added, only those wells that contain Serine/Arginine Rich Splicing Factor 2 (SRSF2), biotin-conjugated antibody and enzyme-conjugated Avidin will exhibit a change in color. The enzyme-substrate reaction is terminated by the addition of sulphuric acid solution and the color change is measured spectrophotometrically at a wavelength of  $450\text{nm} \pm 10\text{nm}$ . The concentration of Serine/Arginine Rich Splicing Factor 2 (SRSF2) in the samples is then determined by comparing the O.D. of the samples to the standard curve.



All products are for RESEARCH USE ONLY. Not for diagnostic & therapeutic purposes!