

ELISA Kit for Aprotinin (AP)

Catalog No: tcue2790



Available Sizes

Size: 96T



Specifications

Research Area:

Enzyme & Kinase;Cardiovascular biology;Human gene deletion;Hepatology;

Species Reactivity:

Bos taurus; Bovine (Cattle)

Sample Type:

serum, plasma, tissue homogenates, cell lysates, cell culture supernates and other biological fluids

Sensitivity:

The minimum detectable dose of this kit is typically less than 0.55ng/mL

Detection Range:

1.23-100ng/mL

Assay Time:

2h

Detection Method:

Enzyme-linked immunosorbent assay for Antigen Detection.

Tested Application:

ELISA

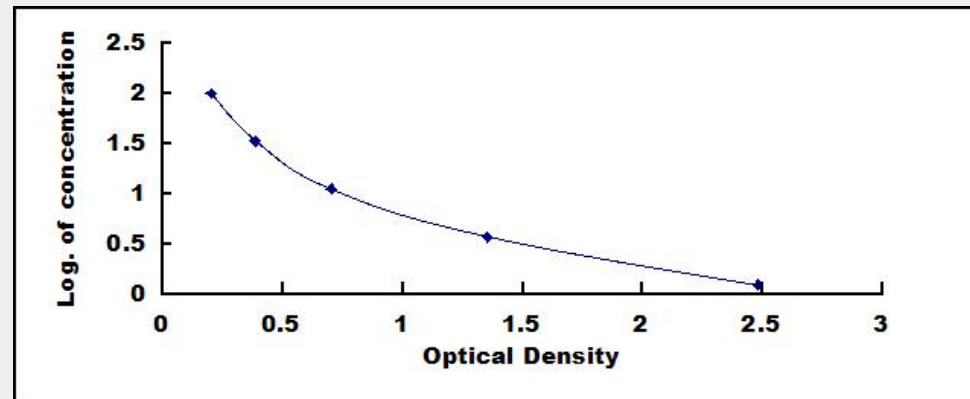
SwissProt:

P00974

Test Principle

This assay employs the competitive inhibition enzyme immunoassay technique. A monoclonal antibody specific to Aprotinin (AP) has

been pre-coated onto a microplate. A competitive inhibition reaction is launched between biotin labeled Aprotinin (AP) and unlabeled Aprotinin (AP) (Standards or samples) with the pre-coated antibody specific to Aprotinin (AP). After incubation the unbound conjugate is washed off. Next, avidin conjugated to Horseradish Peroxidase (HRP) is added to each microplate well and incubated. The amount of bound HRP conjugate is reverse proportional to the concentration of Aprotinin (AP) in the sample. After addition of the substrate solution, the intensity of color developed is reverse proportional to the concentration of Aprotinin (AP) in the sample.



All products are for RESEARCH USE ONLY. Not for diagnostic & therapeutic purposes!