

ELISA Kit for Gastric Intrinsic Factor (GIF)

Catalog No: tcue2735



Available Sizes

Size: 96T



Specifications

Research Area:

Endocrinology;

Species Reactivity:

Homo sapiens (Human)

Sample Type:

Serum, plasma and other biological fluids.

Sensitivity:

The minimum detectable dose of this kit is typically less than 0.95ng/mL

Detection Range:

2.47-200ng/mL

Assay Time:

2h

Detection Method:

Enzyme-linked immunosorbent assay for Antigen Detection.

Tested Application:

ELISA

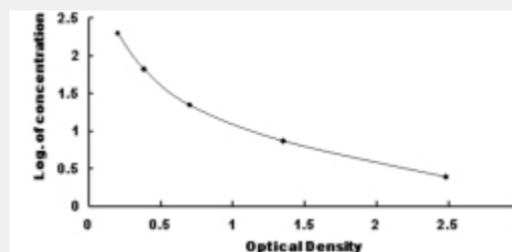
SwissProt:

P27352

Test Principle

This assay employs the competitive inhibition enzyme immunoassay technique. A monoclonal antibody specific to Gastric Intrinsic

Factor (GIF) has been pre-coated onto a microplate. A competitive inhibition reaction is launched between biotin labeled Gastric Intrinsic Factor (GIF) and unlabeled Gastric Intrinsic Factor (GIF) (Standards or samples) with the pre-coated antibody specific to Gastric Intrinsic Factor (GIF). After incubation the unbound conjugate is washed off. Next, avidin conjugated to Horseradish Peroxidase (HRP) is added to each microplate well and incubated. The amount of bound HRP conjugate is reverse proportional to the concentration of Gastric Intrinsic Factor (GIF) in the sample. After addition of the substrate solution, the intensity of color developed is reverse proportional to the concentration of Gastric Intrinsic Factor (GIF) in the sample.



All products are for RESEARCH USE ONLY. Not for diagnostic & therapeutic purposes!