

ELISA Kit for Immunoglobulin G (IgG)

Catalog No: tcue2703



Available Sizes

Size: 96T



Specifications

Research Area:

Infection immunity; Immune molecule; Hematology;

Species Reactivity:

Bos taurus; Bovine (Cattle)

Sample Type:

Serum, plasma and other biological fluids

Sensitivity:

The minimum detectable dose of this kit is typically less than 0.55ug/mL

Detection Range:

1.23-100ug/mL

Assay Time:

2h

Detection Method:

Enzyme-linked immunosorbent assay for Antigen Detection.

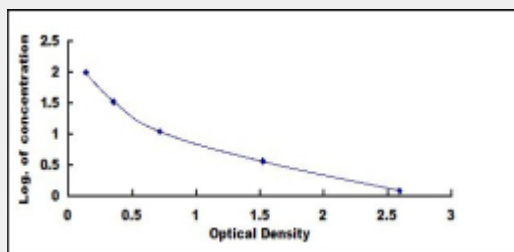
Tested Application:

ELISA

Test Principle

This assay employs the competitive inhibition enzyme immunoassay technique. An antibody specific to Immunoglobulin G (IgG) has been pre-coated onto a microplate. A competitive inhibition reaction is launched between Horseradish Peroxidase (HRP) labeled Immunoglobulin G (IgG) and unlabeled Immunoglobulin G (IgG) (Standards or samples) with the pre-coated antibody specific to Immunoglobulin G (IgG). After incubation the unbound conjugate is washed off. The amount of bound HRP conjugate is reverse proportional to the concentration of Immunoglobulin G (IgG) in the sample. After addition of the substrate solution, the intensity of

color developed is reverse proportional to the concentration of Immunoglobulin G (IgG) in the sample.



All products are for RESEARCH USE ONLY. Not for diagnostic & therapeutic purposes!