

ELISA Kit for Bone Morphogenetic Protein 8B (BMP8B)

Catalog No: tcue2669



Available Sizes

Size: 96T



Specifications

Research Area:

Developmental science; Bone metabolism;

Species Reactivity:

Mus musculus (Mouse)

Sample Type:

serum, plasma, tissue homogenates, cell lysates, cell culture supernates and other biological fluids

Sensitivity:

The minimum detectable dose of this kit is typically less than 0.056ng/mL

Detection Range:

0.156-10ng/mL

Assay Time:

3h

Detection Method:

Enzyme-linked immunosorbent assay for Antigen Detection.

Tested Application:

ELISA

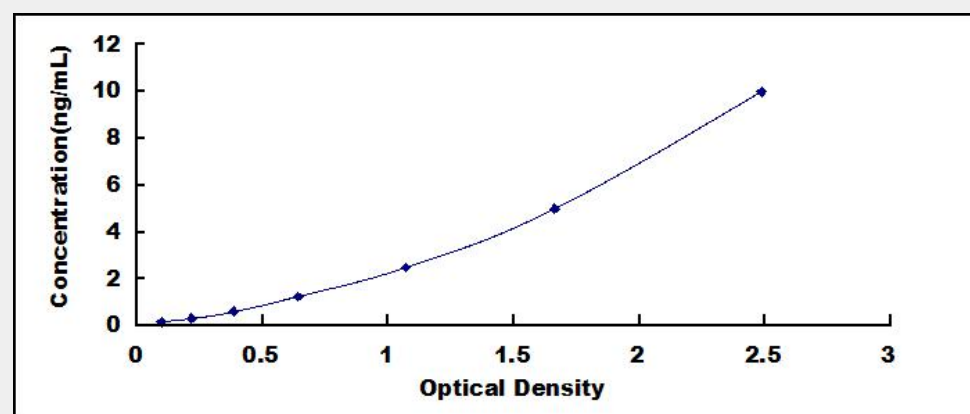
SwissProt:

P55105

Test Principle

The test principle applied in this kit is Sandwich enzyme immunoassay. The microtiter plate provided in this kit has been pre-coated

with an antibody specific to Bone Morphogenetic Protein 8B (BMP8B). Standards or samples are then added to the appropriate microtiter plate wells with a biotin-conjugated antibody specific to Bone Morphogenetic Protein 8B (BMP8B). Next, Avidin conjugated to Horseradish Peroxidase (HRP) is added to each microplate well and incubated. After TMB substrate solution is added, only those wells that contain Bone Morphogenetic Protein 8B (BMP8B), biotin-conjugated antibody and enzyme-conjugated Avidin will exhibit a change in color. The enzyme-substrate reaction is terminated by the addition of sulphuric acid solution and the color change is measured spectrophotometrically at a wavelength of $450\text{nm} \pm 10\text{nm}$. The concentration of Bone Morphogenetic Protein 8B (BMP8B) in the samples is then determined by comparing the O.D. of the samples to the standard curve.



All products are for RESEARCH USE ONLY. Not for diagnostic & therapeutic purposes!