

ELISA Kit for Neurotensin (NT)

Catalog No: tcue2638



Available Sizes

Size: 96T



Specifications

Research Area:

Reproductive science;Neuro science;Hormone metabolism;

Species Reactivity:

Rattus norvegicus (Rat)

Sample Type:

Serum, plasma, tissue homogenates, cell lysates, cell culture supernates and other biological fluids.

Sensitivity:

The minimum detectable dose of this kit is typically less than 15.2pg/mL

Detection Range:

37.04-3000pg/mL

Assay Time:

2h

Detection Method:

Enzyme-linked immunosorbent assay for Antigen Detection.

Tested Application:

ELISA

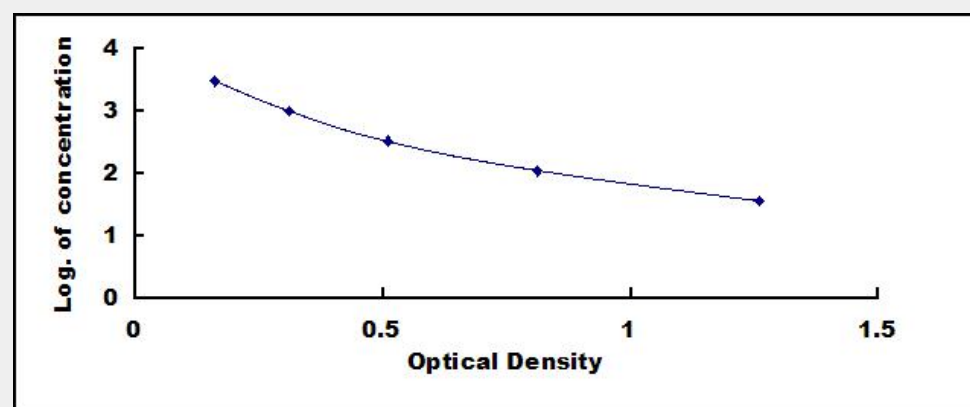
SwissProt:

P20068

Test Principle

This assay employs the competitive inhibition enzyme immunoassay technique. A monoclonal antibody specific to Neurotensin (NT)

has been pre-coated onto a microplate. A competitive inhibition reaction is launched between biotin labeled Neurotensin (NT) and unlabeled Neurotensin (NT) (Standards or samples) with the pre-coated antibody specific to Neurotensin (NT). After incubation the unbound conjugate is washed off. Next, avidin conjugated to Horseradish Peroxidase (HRP) is added to each microplate well and incubated. The amount of bound HRP conjugate is reverse proportional to the concentration of Neurotensin (NT) in the sample. After addition of the substrate solution, the intensity of color developed is reverse proportional to the concentration of Neurotensin (NT) in the sample.



All products are for RESEARCH USE ONLY. Not for diagnostic & therapeutic purposes!