

ELISA Kit for Glucagon Like Peptide 2 (GLP2)

Catalog No: tcue2574



Available Sizes

Size: 96T



Specifications

Species Reactivity:

Homo sapiens (Human)

Sample Type:

serum, plasma, tissue homogenates, cell lysates, cell culture supernates and other biological fluids

Sensitivity:

The minimum detectable dose of this kit is typically less than 52.1pg/mL

Detection Range:

123.5-10000pg/mL

Assay Time:

2h

Detection Method:

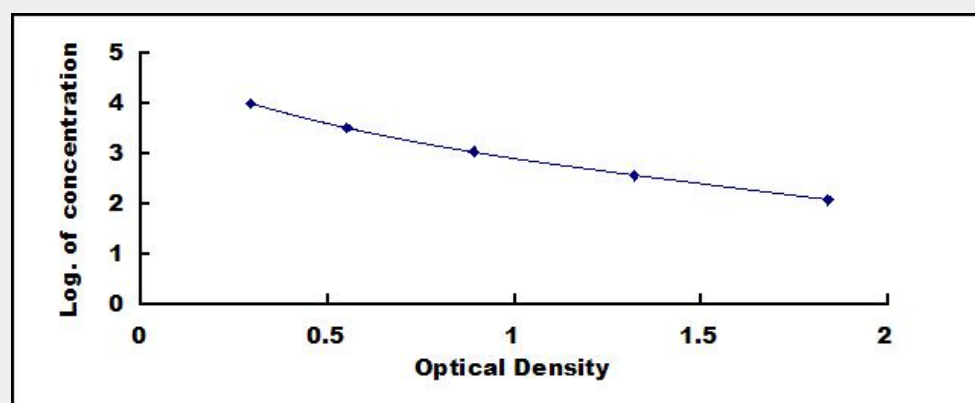
Enzyme-linked immunosorbent assay for Antigen Detection.

Tested Application:

ELISA

Test Principle

This assay employs the competitive inhibition enzyme immunoassay technique. A monoclonal antibody specific to Glucagon Like Peptide 2 (GLP2) has been pre-coated onto a microplate. A competitive inhibition reaction is launched between biotin labeled Glucagon Like Peptide 2 (GLP2) and unlabeled Glucagon Like Peptide 2 (GLP2) (Standards or samples) with the pre-coated antibody specific to Glucagon Like Peptide 2 (GLP2). After incubation the unbound conjugate is washed off. Next, avidin conjugated to Horseradish Peroxidase (HRP) is added to each microplate well and incubated. The amount of bound HRP conjugate is reverse proportional to the concentration of Glucagon Like Peptide 2 (GLP2) in the sample. After addition of the substrate solution, the intensity of color developed is reverse proportional to the concentration of Glucagon Like Peptide 2 (GLP2) in the sample.



All products are for RESEARCH USE ONLY. Not for diagnostic & therapeutic purposes!