

# ELISA Kit for Gremlin 1 (GREM1)

Catalog No: tcue2565



## Available Sizes

**Size:** 96T



## Specifications

### Research Area:

Signal transduction;Tumor immunity;Developmental science;Bone metabolism;

### Species Reactivity:

Homo sapiens (Human)

### Sample Type:

serum, plasma, urine, tissue homogenates and other biological fluids

### Sensitivity:

The minimum detectable dose of this kit is typically less than 55pg/mL

### Detection Range:

125-8,000pg/mL

### Assay Time:

3h

### Detection Method:

Enzyme-linked immunosorbent assay for Antigen Detection.

### Tested Application:

ELISA

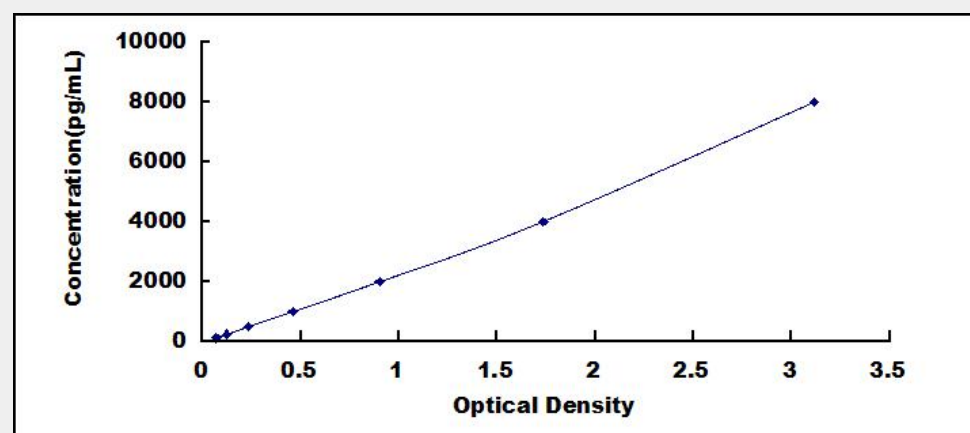
### SwissProt:

O60565

## Test Principle

The test principle applied in this kit is Sandwich enzyme immunoassay. The microtiter plate provided in this kit has been pre-coated

with an antibody specific to Gremlin 1 (GREM1). Standards or samples are then added to the appropriate microtiter plate wells with a biotin-conjugated antibody specific to Gremlin 1 (GREM1). Next, Avidin conjugated to Horseradish Peroxidase (HRP) is added to each microplate well and incubated. After TMB substrate solution is added, only those wells that contain Gremlin 1 (GREM1), biotin-conjugated antibody and enzyme-conjugated Avidin will exhibit a change in color. The enzyme-substrate reaction is terminated by the addition of sulphuric acid solution and the color change is measured spectrophotometrically at a wavelength of  $450\text{nm} \pm 10\text{nm}$ . The concentration of Gremlin 1 (GREM1) in the samples is then determined by comparing the O.D. of the samples to the standard curve.



All products are for RESEARCH USE ONLY. Not for diagnostic & therapeutic purposes!