

# ELISA Kit for Alpha-1-Acid Glycoprotein (a1AGP)

Catalog No: tcue2545



## Available Sizes

**Size:** 96T



## Specifications

### Research Area:

Infection immunity;Hepatology;Gastroenterology;Immunodeficiency;

### Species Reactivity:

Sus scrofa; Porcine (Pig)

### Sample Type:

Serum, plasma and other biological fluids.

### Sensitivity:

The minimum detectable dose of this kit is typically less than 0.19ng/mL

### Detection Range:

0.391-25ng/mL

### Assay Time:

3h

### Detection Method:

Enzyme-linked immunosorbent assay for Antigen Detection.

### Tested Application:

ELISA

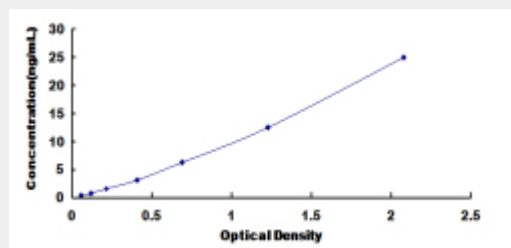
### SwissProt:

Q29014

## Test Principle

The test principle applied in this kit is Sandwich enzyme immunoassay. The microtiter plate provided in this kit has been pre-coated

with an antibody specific to Alpha-1-Acid Glycoprotein (a1AGP). Standards or samples are then added to the appropriate microtiter plate wells with a biotin-conjugated antibody specific to Alpha-1-Acid Glycoprotein (a1AGP). Next, Avidin conjugated to Horseradish Peroxidase (HRP) is added to each microplate well and incubated. After TMB substrate solution is added, only those wells that contain Alpha-1-Acid Glycoprotein (a1AGP), biotin-conjugated antibody and enzyme-conjugated Avidin will exhibit a change in color. The enzyme-substrate reaction is terminated by the addition of sulphuric acid solution and the color change is measured spectrophotometrically at a wavelength of  $450\text{nm} \pm 10\text{nm}$ . The concentration of Alpha-1-Acid Glycoprotein (a1AGP) in the samples is then determined by comparing the O.D. of the samples to the standard curve.



All products are for RESEARCH USE ONLY. Not for diagnostic & therapeutic purposes!