

# ELISA Kit for Arginine (Arg)

Catalog No: tcue2457



## Available Sizes

Size: 96T



## Specifications

### Research Area:

Metabolic pathway; Nutrition metabolism;

### Species Reactivity:

Pan-species (General)

### Sample Type:

serum, plasma, tissue homogenates and other biological fluids

### Sensitivity:

The minimum detectable dose of this kit is typically less than 0.59ug/mL

### Detection Range:

1.23-100ug/mL

### Assay Time:

2h

### Detection Method:

Enzyme-linked immunosorbent assay for Antigen Detection.

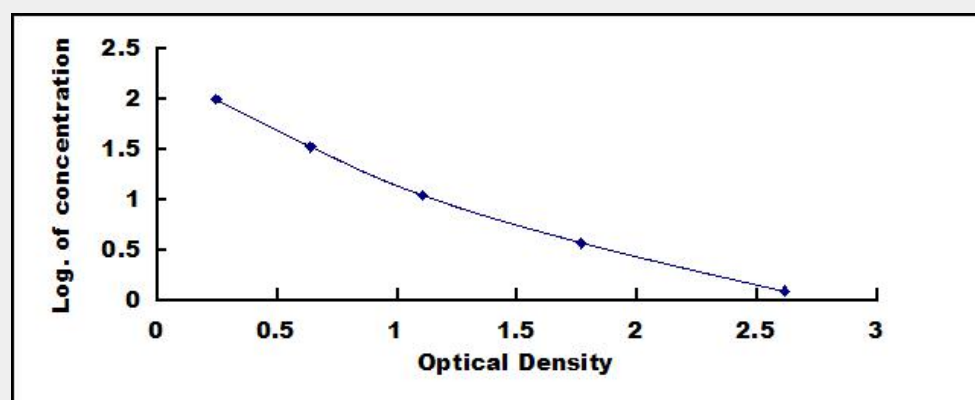
### Tested Application:

ELISA

## Test Principle

This assay employs the competitive inhibition enzyme immunoassay technique. A monoclonal antibody specific to Arginine (Arg) has been pre-coated onto a microplate. A competitive inhibition reaction is launched between biotin labeled Arginine (Arg) and unlabeled Arginine (Arg) (Standards or samples) with the pre-coated antibody specific to Arginine (Arg). After incubation the unbound conjugate is washed off. Next, avidin conjugated to Horseradish Peroxidase (HRP) is added to each microplate well and incubated. The amount of bound HRP conjugate is reverse proportional to the concentration of Arginine (Arg) in the sample. After addition of the

substrate solution, the intensity of color developed is reverse proportional to the concentration of Arginine (Arg) in the sample.



All products are for RESEARCH USE ONLY. Not for diagnostic & therapeutic purposes!