

# ELISA Kit for Progesterone (PG)

Catalog No: tcue2427



## Available Sizes

Size: 96T



## Specifications

### Research Area:

Endocrinology; Reproductive science; Hormone metabolism;

### Species Reactivity:

Pan-species (General)

### Sample Type:

serum, plasma and other biological fluids

### Sensitivity:

The minimum detectable dose of this kit is typically less than 0.47ng/mL

### Detection Range:

1.23-100ng/mL

### Assay Time:

2h

### Detection Method:

Enzyme-linked immunosorbent assay for Antigen Detection.

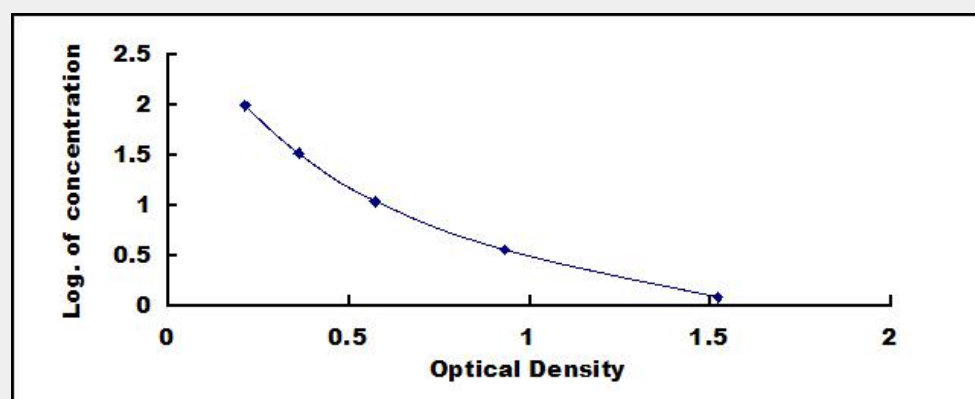
### Tested Application:

ELISA

## Test Principle

This assay employs the competitive inhibition enzyme immunoassay technique. A monoclonal antibody specific to Progesterone (PG) has been pre-coated onto a microplate. A competitive inhibition reaction is launched between biotin labeled Progesterone (PG) and unlabeled Progesterone (PG) (Standards or samples) with the pre-coated antibody specific to Progesterone (PG). After incubation the unbound conjugate is washed off. Next, avidin conjugated to Horseradish Peroxidase (HRP) is added to each microplate well and incubated. The amount of bound HRP conjugate is reverse proportional to the concentration of Progesterone (PG) in the sample.

After addition of the substrate solution, the intensity of color developed is reverse proportional to the concentration of Progesterone (PG) in the sample.



All products are for RESEARCH USE ONLY. Not for diagnostic & therapeutic purposes!