

# ELISA Kit for Thymosin Beta 10 (TMSb10)

Catalog No: tcue2406



## Available Sizes

Size: 96T



## Specifications

### Research Area:

Endocrinology;

### Species Reactivity:

Homo sapiens (Human)

### Sample Type:

Serum, plasma, tissue homogenates and other biological fluids.

### Sensitivity:

The minimum detectable dose of this kit is typically less than 13.52ng/mL

### Detection Range:

24.69-2000ng/mL

### Assay Time:

2h

### Detection Method:

Enzyme-linked immunosorbent assay for Antigen Detection.

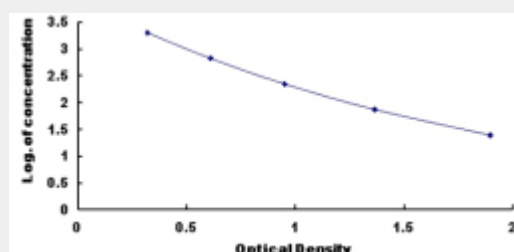
### Tested Application:

ELISA

## Test Principle

This assay employs the competitive inhibition enzyme immunoassay technique. A monoclonal antibody specific to Thymosin Beta 10 (TMSb10) has been pre-coated onto a microplate. A competitive inhibition reaction is launched between biotin labeled Thymosin Beta 10 (TMSb10) and unlabeled Thymosin Beta 10 (TMSb10) (Standards or samples) with the pre-coated antibody specific to Thymosin Beta 10 (TMSb10). After incubation the unbound conjugate is washed off. Next, avidin conjugated to Horseradish Peroxidase (HRP) is added to each microplate well and incubated. The amount of bound HRP conjugate is reverse proportional to the

concentration of Thymosin Beta 10 (TMSb10) in the sample. After addition of the substrate solution, the intensity of color developed is reverse proportional to the concentration of Thymosin Beta 10 (TMSb10) in the sample.



All products are for RESEARCH USE ONLY. Not for diagnostic & therapeutic purposes!