

ELISA Kit for Chemokine C-C-Motif Receptor 3 (CCR3)

Catalog No: tcue2391



Available Sizes

Size: 96T



Specifications

Research Area:

CD & Adhesion molecule; Tumor immunity; Infection immunity;

Species Reactivity:

Homo sapiens (Human)

Sample Type:

Tissue homogenates, cell lysates and other biological fluids.

Sensitivity:

The minimum detectable dose of this kit is typically less than 13.7pg/mL

Detection Range:

31.25-2000pg/mL

Assay Time:

3h

Detection Method:

Enzyme-linked immunosorbent assay for Antigen Detection.

Tested Application:

ELISA

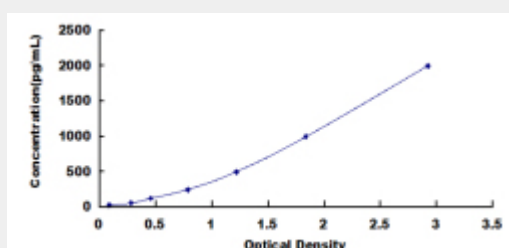
SwissProt:

P51677

Test Principle

The test principle applied in this kit is Sandwich enzyme immunoassay. The microtiter plate provided in this kit has been pre-coated

with an antibody specific to Chemokine C-C-Motif Receptor 3 (CCR3). Standards or samples are then added to the appropriate microtiter plate wells with a biotin-conjugated antibody specific to Chemokine C-C-Motif Receptor 3 (CCR3). Next, Avidin conjugated to Horseradish Peroxidase (HRP) is added to each microplate well and incubated. After TMB substrate solution is added, only those wells that contain Chemokine C-C-Motif Receptor 3 (CCR3), biotin-conjugated antibody and enzyme-conjugated Avidin will exhibit a change in color. The enzyme-substrate reaction is terminated by the addition of sulphuric acid solution and the color change is measured spectrophotometrically at a wavelength of $450\text{nm} \pm 10\text{nm}$. The concentration of Chemokine C-C-Motif Receptor 3 (CCR3) in the samples is then determined by comparing the O.D. of the samples to the standard curve.



All products are for RESEARCH USE ONLY. Not for diagnostic & therapeutic purposes!