

# ELISA Kit for Synaptophysin (SYP)

Catalog No: tcue2380



## Available Sizes

**Size:** 96T



## Specifications

**Research Area:**

Neuro science;

**Species Reactivity:**

Mus musculus (Mouse)

**Sample Type:**

serum, plasma, tissue homogenates, cerebrospinal fluid and other biological fluids

**Sensitivity:**

The minimum detectable dose of this kit is typically less than 0.262ng/mL

**Detection Range:**

0.625-40ng/mL

**Assay Time:**

3h

**Detection Method:**

Enzyme-linked immunosorbent assay for Antigen Detection.

**Tested Application:**

ELISA

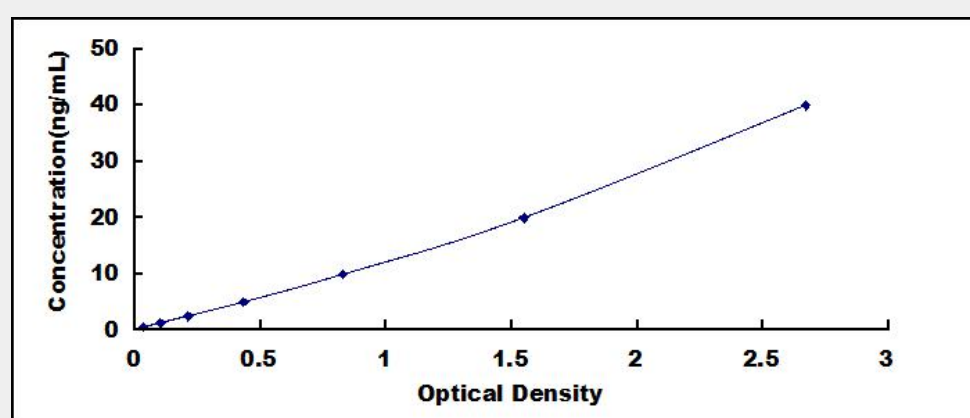
**SwissProt:**

Q62277

## Test Principle

The test principle applied in this kit is Sandwich enzyme immunoassay. The microtiter plate provided in this kit has been pre-coated

with an antibody specific to Synaptophysin (SYP). Standards or samples are then added to the appropriate microtiter plate wells with a biotin-conjugated antibody specific to Synaptophysin (SYP). Next, Avidin conjugated to Horseradish Peroxidase (HRP) is added to each microplate well and incubated. After TMB substrate solution is added, only those wells that contain Synaptophysin (SYP), biotin-conjugated antibody and enzyme-conjugated Avidin will exhibit a change in color. The enzyme-substrate reaction is terminated by the addition of sulphuric acid solution and the color change is measured spectrophotometrically at a wavelength of  $450\text{nm} \pm 10\text{nm}$ . The concentration of Synaptophysin (SYP) in the samples is then determined by comparing the O.D. of the samples to the standard curve.



All products are for RESEARCH USE ONLY. Not for diagnostic & therapeutic purposes!