

# ELISA Kit for High Mobility Group Protein 1 (HMG1)

Catalog No: tcue2338



## Available Sizes

**Size:** 96T



## Specifications

**Research Area:**

Infection immunity;

**Species Reactivity:**

Sus scrofa; Porcine (Pig)

**Sample Type:**

Serum, plasma and other biological fluids

**Sensitivity:**

The minimum detectable dose of this kit is typically less than 6.1pg/mL

**Detection Range:**

15.6-1000pg/mL

**Assay Time:**

3h

**Detection Method:**

Enzyme-linked immunosorbent assay for Antigen Detection.

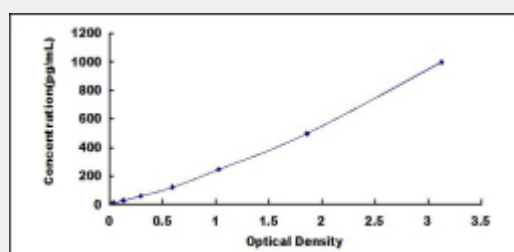
**Tested Application:**

ELISA

## Test Principle

The test principle applied in this kit is Sandwich enzyme immunoassay. The microtiter plate provided in this kit has been pre-coated with an antibody specific to High Mobility Group Protein 1 (HMG1). Standards or samples are then added to the appropriate microtiter plate wells with a biotin-conjugated antibody specific to High Mobility Group Protein 1 (HMG1). Next, Avidin conjugated to Horseradish Peroxidase (HRP) is added to each microplate well and incubated. After TMB substrate solution is added, only those wells that contain High Mobility Group Protein 1 (HMG1), biotin-conjugated antibody and enzyme-conjugated Avidin will exhibit a

change in color. The enzyme-substrate reaction is terminated by the addition of sulphuric acid solution and the color change is measured spectrophotometrically at a wavelength of  $450\text{nm} \pm 10\text{nm}$ . The concentration of High Mobility Group Protein 1 (HMG1) in the samples is then determined by comparing the O.D. of the samples to the standard curve.



All products are for RESEARCH USE ONLY. Not for diagnostic & therapeutic purposes!