

# ELISA Kit for Vitamin B1 (VB1)

Catalog No: tcue2330



## Available Sizes

**Size:** 96T



## Specifications

**Species Reactivity:**

Pan-species (General)

**Sample Type:**

serum, plasma and other biological fluids

**Sensitivity:**

The minimum detectable dose of this kit is typically less than 1.63ng/mL

**Detection Range:**

3.70-300ng/mL

**Assay Time:**

2h

**Detection Method:**

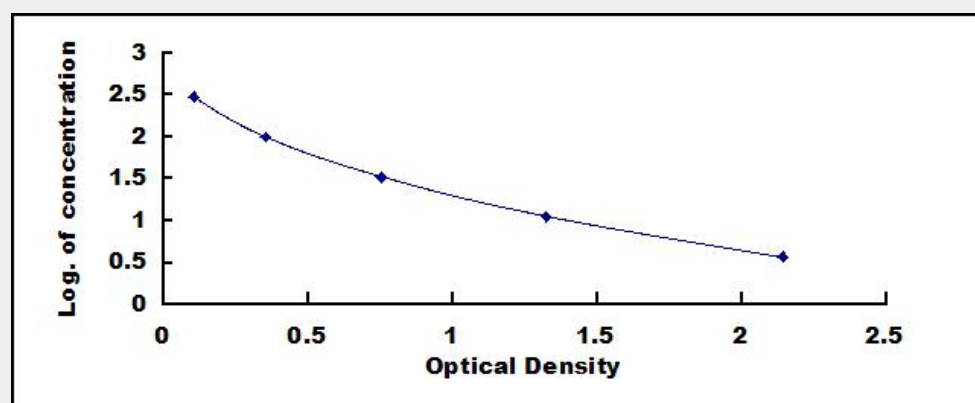
Enzyme-linked immunosorbent assay for Antigen Detection.

**Tested Application:**

ELISA

## Test Principle

This assay employs the competitive inhibition enzyme immunoassay technique. A monoclonal antibody specific to Vitamin B1 (VB1) has been pre-coated onto a microplate. A competitive inhibition reaction is launched between biotin labeled Vitamin B1 (VB1) and unlabeled Vitamin B1 (VB1) (Standards or samples) with the pre-coated antibody specific to Vitamin B1 (VB1). After incubation the unbound conjugate is washed off. Next, avidin conjugated to Horseradish Peroxidase (HRP) is added to each microplate well and incubated. The amount of bound HRP conjugate is reverse proportional to the concentration of Vitamin B1 (VB1) in the sample. After addition of the substrate solution, the intensity of color developed is reverse proportional to the concentration of Vitamin B1 (VB1) in the sample.



All products are for RESEARCH USE ONLY. Not for diagnostic & therapeutic purposes!