

# ELISA Kit for Very Low Density Lipoprotein (VLDL)

Catalog No: tcue2308



## Available Sizes

---

**Size:** 96T



## Specifications

---

**Research Area:**

Metabolic pathway;Endocrinology;Cardiovascular biology;Nutrition metabolism;

**Species Reactivity:**

Homo sapiens (Human)

**Sample Type:**

serum, plasma and other biological fluids

**Sensitivity:**

The minimum detectable dose of this kit is typically less than 0.11ng/mL

**Detection Range:**

0.24-15ng/mL

**Assay Time:**

3h

**Detection Method:**

Enzyme-linked immunosorbent assay for Antigen Detection.

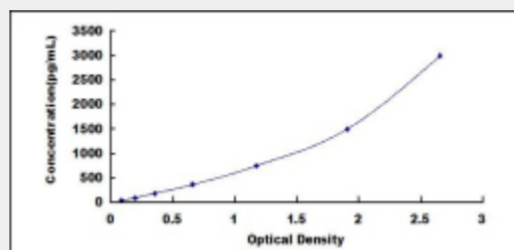
**Tested Application:**

ELISA

## Test Principle

The test principle applied in this kit is Sandwich enzyme immunoassay. The microtiter plate provided in this kit has been pre-coated with an antibody specific to Very Low Density Lipoprotein (VLDL). Standards or samples are then added to the appropriate microtiter plate wells with a biotin-conjugated antibody specific to Very Low Density Lipoprotein (VLDL). Next, Avidin conjugated to Horseradish Peroxidase (HRP) is added to each microplate well and incubated. After TMB substrate solution is added, only those wells that contain Very Low Density Lipoprotein (VLDL), biotin-conjugated antibody and enzyme-conjugated Avidin will exhibit a change in

color. The enzyme-substrate reaction is terminated by the addition of sulphuric acid solution and the color change is measured spectrophotometrically at a wavelength of  $450\text{nm} \pm 10\text{nm}$ . The concentration of Very Low Density Lipoprotein (VLDL) in the samples is then determined by comparing the O.D. of the samples to the standard curve.



All products are for RESEARCH USE ONLY. Not for diagnostic & therapeutic purposes!