

ELISA Kit for Eosinophil Chemotactic Factor (ECF)

Catalog No: tcue2285



Available Sizes

Size: 96T



Specifications

Research Area:

Cytokine; Infection immunity; Autoimmunity;

Species Reactivity:

Rhesus monkey (Simian)

Sample Type:

Serum, plasma and other biological fluids.

Sensitivity:

The minimum detectable dose of this kit is typically less than 5.8pg/mL

Detection Range:

15.62-1000pg/mL

Assay Time:

3h

Detection Method:

Enzyme-linked immunosorbent assay for Antigen Detection.

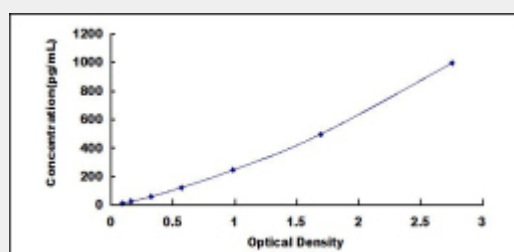
Tested Application:

ELISA

Test Principle

The test principle applied in this kit is Sandwich enzyme immunoassay. The microtiter plate provided in this kit has been pre-coated with an antibody specific to Eosinophil Chemotactic Factor (ECF). Standards or samples are then added to the appropriate microtiter plate wells with a biotin-conjugated antibody specific to Eosinophil Chemotactic Factor (ECF). Next, Avidin conjugated to Horseradish Peroxidase (HRP) is added to each microplate well and incubated. After TMB substrate solution is added, only those wells that contain Eosinophil Chemotactic Factor (ECF), biotin-conjugated antibody and enzyme-conjugated Avidin will exhibit a change in

color. The enzyme-substrate reaction is terminated by the addition of sulphuric acid solution and the color change is measured spectrophotometrically at a wavelength of $450\text{nm} \pm 10\text{nm}$. The concentration of Eosinophil Chemotactic Factor (ECF) in the samples is then determined by comparing the O.D. of the samples to the standard curve.



All products are for RESEARCH USE ONLY. Not for diagnostic & therapeutic purposes!