

ELISA Kit for Cathepsin K (CTSK)

Catalog No: tcue2196



Available Sizes

Size: 96T



Specifications

Research Area:

Enzyme & Kinase; Infection immunity; Bone metabolism;

Species Reactivity:

Sus scrofa; Porcine (Pig)

Sample Type:

Serum, plasma and other biological fluids.

Sensitivity:

The minimum detectable dose of this kit is typically less than 0.112ng/mL

Detection Range:

0.312-20ng/mL

Assay Time:

3h

Detection Method:

Enzyme-linked immunosorbent assay for Antigen Detection.

Tested Application:

ELISA

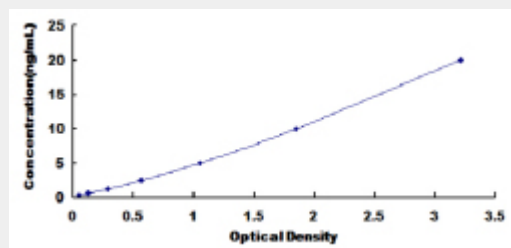
SwissProt:

Q9GLE3

Test Principle

The test principle applied in this kit is Sandwich enzyme immunoassay. The microtiter plate provided in this kit has been pre-coated

with an antibody specific to Cathepsin K (CTSK). Standards or samples are then added to the appropriate microtiter plate wells with a biotin-conjugated antibody specific to Cathepsin K (CTSK). Next, Avidin conjugated to Horseradish Peroxidase (HRP) is added to each microplate well and incubated. After TMB substrate solution is added, only those wells that contain Cathepsin K (CTSK), biotin-conjugated antibody and enzyme-conjugated Avidin will exhibit a change in color. The enzyme-substrate reaction is terminated by the addition of sulphuric acid solution and the color change is measured spectrophotometrically at a wavelength of $450\text{nm} \pm 10\text{nm}$. The concentration of Cathepsin K (CTSK) in the samples is then determined by comparing the O.D. of the samples to the standard curve.



All products are for RESEARCH USE ONLY. Not for diagnostic & therapeutic purposes!