

ELISA Kit for Immunoglobulin G1 (IgG1)

Catalog No: tcue2165



Available Sizes

Size: 96T



Specifications

Research Area:

Immune molecule;

Species Reactivity:

Mus musculus (Mouse)

Sample Type:

Serum, plasma and other biological fluids

Sensitivity:

The minimum detectable dose of this kit is typically less than 259.3ng/mL

Detection Range:

617.28-50000ng/mL

Assay Time:

2h

Detection Method:

Enzyme-linked immunosorbent assay for Antigen Detection.

Tested Application:

ELISA

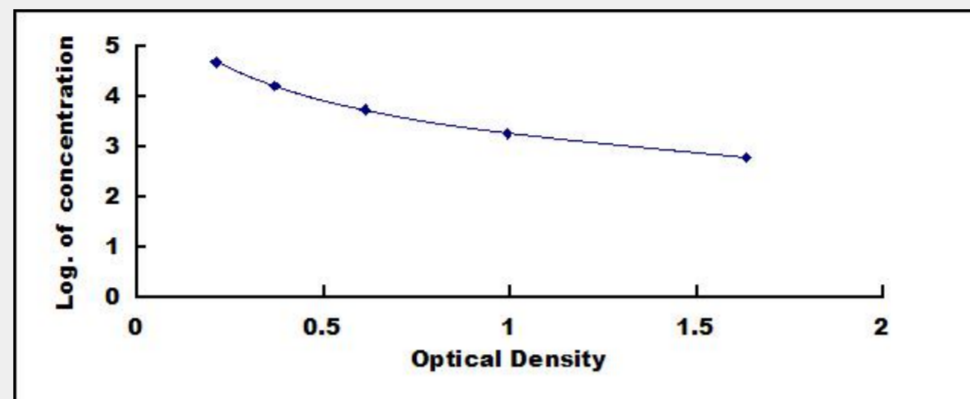
SwissProt:

A0A075B5P4

Test Principle

The microtiter plate provided in this kit has been pre-coated with an antigen. Standards or samples are then added to the

appropriate microtiter plate wells with a Horseradish Peroxidase (HRP)-conjugated secondary antibody. After TMB substrate solution is added, those wells that contain Immunoglobulin G1 (IgG1) will exhibit a change in color. The enzyme-substrate reaction is terminated by the addition of sulphuric acid solution and the color change is measured spectrophotometrically at a wavelength of $450\text{nm} \pm 10\text{nm}$. The concentration of Immunoglobulin G1 (IgG1) in the samples is then determined by comparing the O.D. of the samples to the standard curve.



All products are for RESEARCH USE ONLY. Not for diagnostic & therapeutic purposes!