

# ELISA Kit for Terminal Complement Complex C5b-9 (C5b-9)

Catalog No: tcue2145



## Available Sizes

Size: 96T



## Specifications

### Research Area:

Signal transduction;Metabolic pathway;Apoptosis;Infection immunity;

### Species Reactivity:

Mus musculus (Mouse)

### Sample Type:

serum, plasma and other biological fluids

### Sensitivity:

The minimum detectable dose of this kit is typically less than 0.61ng/mL

### Detection Range:

1.56-100ng/mL

### Assay Time:

3h

### Detection Method:

Enzyme-linked immunosorbent assay for Antigen Detection.

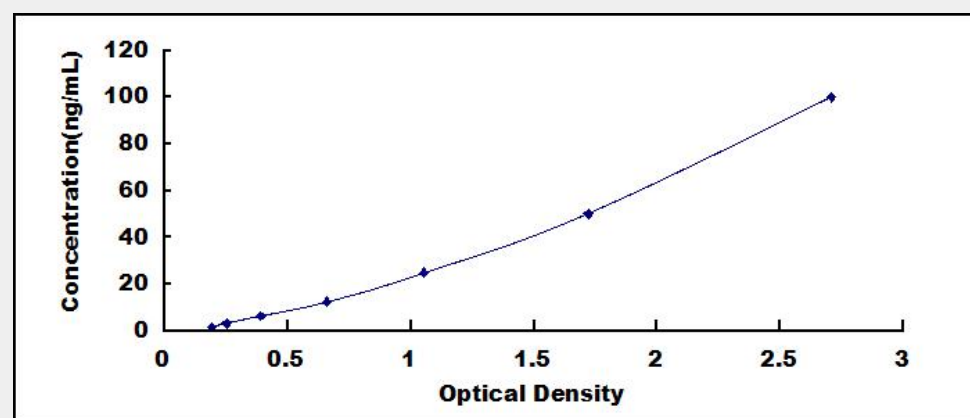
### Tested Application:

ELISA

## Test Principle

The test principle applied in this kit is Sandwich enzyme immunoassay. The microtiter plate provided in this kit has been pre-coated with an antibody specific to Terminal Complement Complex C5b-9 (C5b-9). Standards or samples are then added to the appropriate

microtiter plate wells with a biotin-conjugated antibody specific to Terminal Complement Complex C5b-9 (C5b-9). Next, Avidin conjugated to Horseradish Peroxidase (HRP) is added to each microplate well and incubated. After TMB substrate solution is added, only those wells that contain Terminal Complement Complex C5b-9 (C5b-9), biotin-conjugated antibody and enzyme-conjugated Avidin will exhibit a change in color. The enzyme-substrate reaction is terminated by the addition of sulphuric acid solution and the color change is measured spectrophotometrically at a wavelength of  $450\text{nm} \pm 10\text{nm}$ . The concentration of Terminal Complement Complex C5b-9 (C5b-9) in the samples is then determined by comparing the O.D. of the samples to the standard curve.



All products are for RESEARCH USE ONLY. Not for diagnostic & therapeutic purposes!