

ELISA Kit for Insulin Like Growth Factor Binding Protein 4 (IGFBP4)

Catalog No: tcue2072



Available Sizes

Size: 96T



Specifications

Research Area:

Apoptosis;Tumor immunity;

Species Reactivity:

Bos taurus; Bovine (Cattle)

Sample Type:

Serum, plasma and other biological fluids..

Sensitivity:

The minimum detectable dose of this kit is typically less than 29.62pg/mL

Detection Range:

74.07-6000pg/mL

Assay Time:

2h

Detection Method:

Enzyme-linked immunosorbent assay for Antigen Detection.

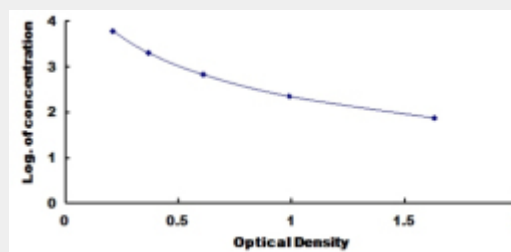
Tested Application:

ELISA

Test Principle

This assay employs the competitive inhibition enzyme immunoassay technique. A monoclonal antibody specific to Insulin Like Growth Factor Binding Protein 4 (IGFBP4) has been pre-coated onto a microplate. A competitive inhibition reaction is launched

between biotin labeled Insulin Like Growth Factor Binding Protein 4 (IGFBP4) and unlabeled Insulin Like Growth Factor Binding Protein 4 (IGFBP4) (Standards or samples) with the pre-coated antibody specific to Insulin Like Growth Factor Binding Protein 4 (IGFBP4). After incubation the unbound conjugate is washed off. Next, avidin conjugated to Horseradish Peroxidase (HRP) is added to each microplate well and incubated. The amount of bound HRP conjugate is reverse proportional to the concentration of Insulin Like Growth Factor Binding Protein 4 (IGFBP4) in the sample. After addition of the substrate solution, the intensity of color developed is reverse proportional to the concentration of Insulin Like Growth Factor Binding Protein 4 (IGFBP4) in the sample.



All products are for RESEARCH USE ONLY. Not for diagnostic & therapeutic purposes!