

# ELISA Kit for Salmon Calcitonin (SCT)

Catalog No: tcue1969



## Available Sizes

**Size:** 96T



## Specifications

**Species Reactivity:**

Pan-species (General)

**Sample Type:**

biological agents

**Sensitivity:**

The minimum detectable dose of this kit is typically less than 31.4pg/mL

**Detection Range:**

78.1-20000pg/mL

**Assay Time:**

2h

**Detection Method:**

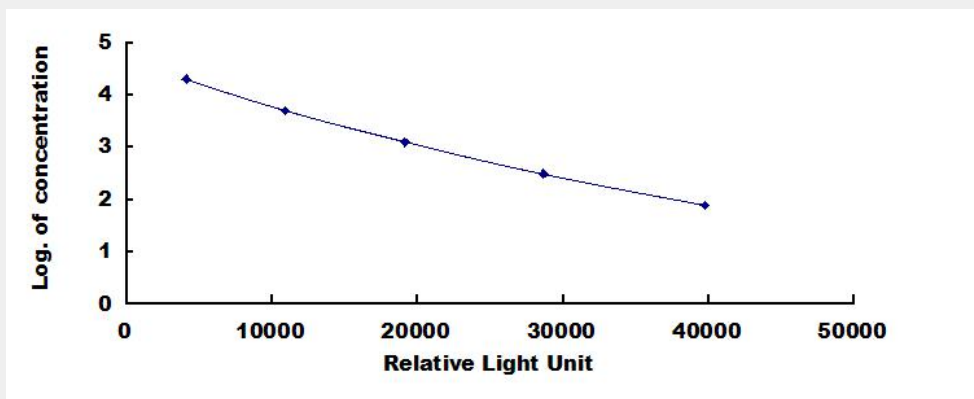
Enzyme-linked immunosorbent assay for Antigen Detection.

**Tested Application:**

ELISA

## Test Principle

This assay employs the competitive inhibition enzyme immunoassay technique. A monoclonal antibody specific to Salmon Calcitonin (SCT) has been pre-coated onto a microplate. A competitive inhibition reaction is launched between biotin labeled Salmon Calcitonin (SCT) and unlabeled Salmon Calcitonin (SCT) (Standards or samples) with the pre-coated antibody specific to Salmon Calcitonin (SCT). After incubation the unbound conjugate is washed off. Next, avidin conjugated to Horseradish Peroxidase (HRP) is added to each microplate well and incubated. The amount of bound HRP conjugate is reverse proportional to the concentration of Salmon Calcitonin (SCT) in the sample. After addition of the substrate solution, the intensity of color developed is reverse proportional to the concentration of Salmon Calcitonin (SCT) in the sample.



All products are for RESEARCH USE ONLY. Not for diagnostic & therapeutic purposes!