

# ELISA Kit for Interferon Gamma Induced Protein 10kDa (IP10)

Catalog No: **tcue1966**



## Available Sizes

---

**Size:** 96T



## Specifications

---

**Research Area:**

Cytokine;Tumor immunity;Infection immunity;

---

**Species Reactivity:**

Canis familiaris; Canine (Dog)

---

**Sample Type:**

serum, plasma, tissue homogenates, cell lysates, cell culture supernates and other biological fluids

---

**Sensitivity:**

The minimum detectable dose of this kit is typically less than 6.8pg/mL

---

**Detection Range:**

15.6-1,000pg/mL

---

**Assay Time:**

3h

---

**Detection Method:**

Enzyme-linked immunosorbent assay for Antigen Detection.

---

**Tested Application:**

ELISA

---

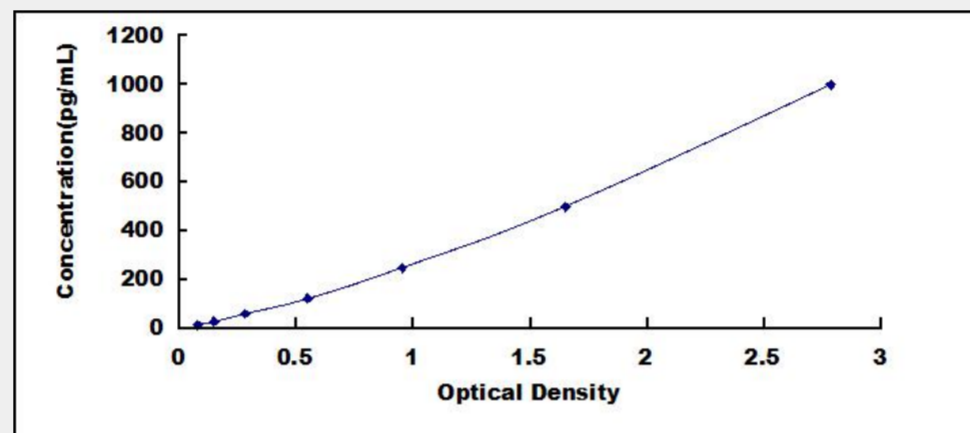
**SwissProt:**

Q5KSV9

---

## Test Principle

The test principle applied in this kit is Sandwich enzyme immunoassay. The microtiter plate provided in this kit has been pre-coated with an antibody specific to Interferon Gamma Induced Protein 10kDa (IP10). Standards or samples are then added to the appropriate microtiter plate wells with a biotin-conjugated antibody specific to Interferon Gamma Induced Protein 10kDa (IP10). Next, Avidin conjugated to Horseradish Peroxidase (HRP) is added to each microplate well and incubated. After TMB substrate solution is added, only those wells that contain Interferon Gamma Induced Protein 10kDa (IP10), biotin-conjugated antibody and enzyme-conjugated Avidin will exhibit a change in color. The enzyme-substrate reaction is terminated by the addition of sulphuric acid solution and the color change is measured spectrophotometrically at a wavelength of  $450\text{nm} \pm 10\text{nm}$ . The concentration of Interferon Gamma Induced Protein 10kDa (IP10) in the samples is then determined by comparing the O.D. of the samples to the standard curve.



All products are for RESEARCH USE ONLY. Not for diagnostic & therapeutic purposes!