

ELISA Kit for Reverse Triiodothyronine (rT3)

Catalog No: tcue1879



Available Sizes

Size: 96T



Specifications

Research Area:

Infection immunity;Endocrinology;Hormone metabolism;Autoimmunity;

Species Reactivity:

Pan-species (General)

Sample Type:

serum, plasma and other biological fluids

Sensitivity:

The minimum detectable dose of this kit is typically less than 27.55pg/mL

Detection Range:

74.07-6000pg/mL

Assay Time:

2h

Detection Method:

Enzyme-linked immunosorbent assay for Antigen Detection.

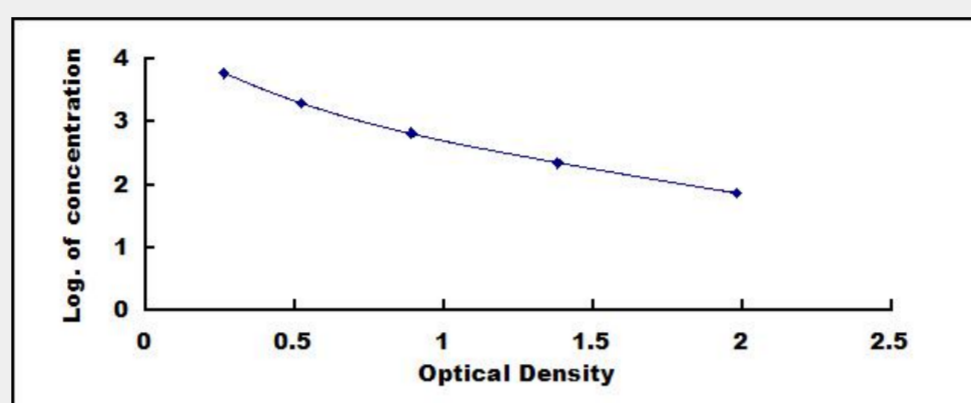
Tested Application:

ELISA

Test Principle

This assay employs the competitive inhibition enzyme immunoassay technique. A monoclonal antibody specific to Reverse Triiodothyronine (rT3) has been pre-coated onto a microplate. A competitive inhibition reaction is launched between biotin labeled Reverse Triiodothyronine (rT3) and unlabeled Reverse Triiodothyronine (rT3) (Standards or samples) with the pre-coated antibody specific to Reverse Triiodothyronine (rT3). After incubation the unbound conjugate is washed off. Next, avidin conjugated to Horseradish Peroxidase (HRP) is added to each microplate well and incubated. The amount of bound HRP conjugate is reverse

proportional to the concentration of Reverse Triiodothyronine (rT3) in the sample. After addition of the substrate solution, the intensity of color developed is reverse proportional to the concentration of Reverse Triiodothyronine (rT3) in the sample.



All products are for RESEARCH USE ONLY. Not for diagnostic & therapeutic purposes!