

# ELISA Kit for Arachidonate-5-Lipoxygenase (ALOX5)

Catalog No: tcue1826



## Available Sizes

---

**Size:** 96T



## Specifications

---

**Research Area:**

Enzyme & Kinase;Metabolic pathway;Tumor immunity;Cardiovascular biology;Neuro science;

**Species Reactivity:**

Rattus norvegicus (Rat)

**Sample Type:**

tissue homogenates, cell lysates and other biological fluids

**Sensitivity:**

The minimum detectable dose of this kit is typically less than 0.27ng/mL

**Detection Range:**

0.78-50ng/mL

**Assay Time:**

3h

**Detection Method:**

Enzyme-linked immunosorbent assay for Antigen Detection.

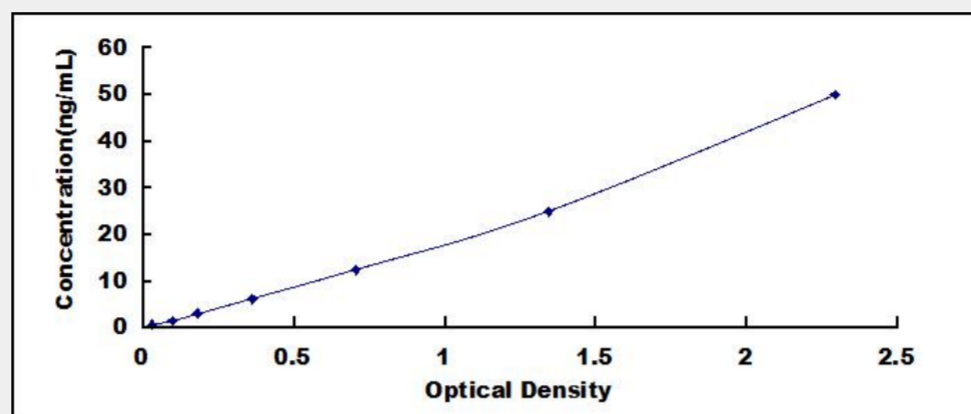
**Tested Application:**

ELISA

## Test Principle

The test principle applied in this kit is Sandwich enzyme immunoassay. The microtiter plate provided in this kit has been pre-coated with an antibody specific to Arachidonate-5-Lipoxygenase (ALOX5). Standards or samples are then added to the appropriate microtiter plate wells with a biotin-conjugated antibody specific to Arachidonate-5-Lipoxygenase (ALOX5). Next, Avidin conjugated to Horseradish Peroxidase (HRP) is added to each microplate well and incubated. After TMB substrate solution is added, only those wells that contain Arachidonate-5-Lipoxygenase (ALOX5), biotin-conjugated antibody and enzyme-conjugated Avidin will exhibit a

change in color. The enzyme-substrate reaction is terminated by the addition of sulphuric acid solution and the color change is measured spectrophotometrically at a wavelength of  $450\text{nm} \pm 10\text{nm}$ . The concentration of Arachidonate-5-Lipoxygenase (ALOX5) in the samples is then determined by comparing the O.D. of the samples to the standard curve.



All products are for RESEARCH USE ONLY. Not for diagnostic & therapeutic purposes!