

ELISA Kit for Defensin Alpha 5, Paneth Cell Specific (DEFa5)

Catalog No: **tcue1776**



Available Sizes

Size: 96T



Specifications

Research Area:

Infection immunity;Hepatology;Gastroenterology;

Species Reactivity:

Homo sapiens (Human)

Sample Type:

serum, plasma, tissue homogenates, cell lysates, cell culture supernates and other biological fluids

Sensitivity:

The minimum detectable dose of this kit is typically less than 5.9pg/mL

Detection Range:

15.6-1,000pg/mL

Assay Time:

3h

Detection Method:

Enzyme-linked immunosorbent assay for Antigen Detection.

Tested Application:

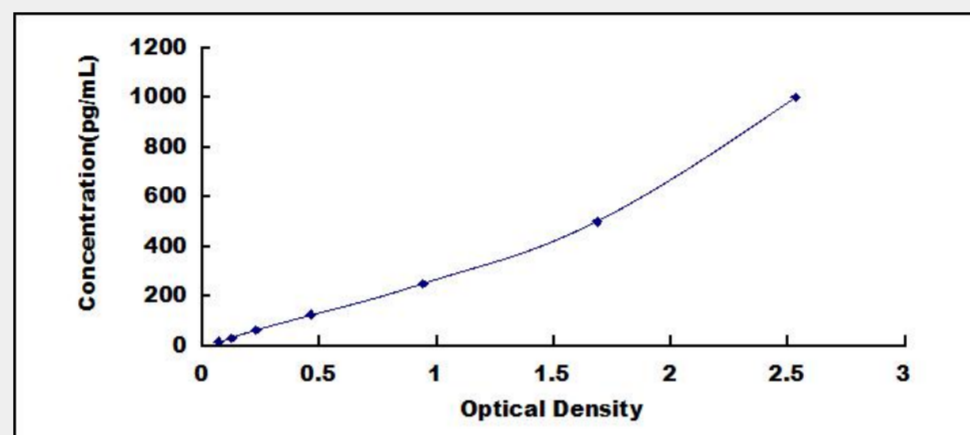
ELISA

SwissProt:

Q01523

Test Principle

The test principle applied in this kit is Sandwich enzyme immunoassay. The microtiter plate provided in this kit has been pre-coated with an antibody specific to Defensin Alpha 5, Paneth Cell Specific (DEFa5). Standards or samples are then added to the appropriate microtiter plate wells with a biotin-conjugated antibody specific to Defensin Alpha 5, Paneth Cell Specific (DEFa5). Next, Avidin conjugated to Horseradish Peroxidase (HRP) is added to each microplate well and incubated. After TMB substrate solution is added, only those wells that contain Defensin Alpha 5, Paneth Cell Specific (DEFa5), biotin-conjugated antibody and enzyme-conjugated Avidin will exhibit a change in color. The enzyme-substrate reaction is terminated by the addition of sulphuric acid solution and the color change is measured spectrophotometrically at a wavelength of $450\text{nm} \pm 10\text{nm}$. The concentration of Defensin Alpha 5, Paneth Cell Specific (DEFa5) in the samples is then determined by comparing the O.D. of the samples to the standard curve.



All products are for RESEARCH USE ONLY. Not for diagnostic & therapeutic purposes!