

# ELISA Kit for Kallikrein 7 (KLK7)

Catalog No: tcue1768



## Available Sizes

---

**Size:** 96T



## Specifications

---

**Research Area:**

Enzyme & Kinase; Tumor immunity;

**Species Reactivity:**

Homo sapiens (Human)

**Sample Type:**

Serum, plasma, tissue homogenates and other biological fluids

**Sensitivity:**

The minimum detectable dose of this kit is typically less than 0.059ng/mL

**Detection Range:**

0.156-10ng/mL

**Assay Time:**

3h

**Detection Method:**

Enzyme-linked immunosorbent assay for Antigen Detection.

**Tested Application:**

ELISA

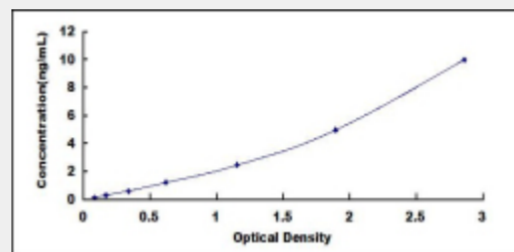
**SwissProt:**

P49862

## Test Principle

The test principle applied in this kit is Sandwich enzyme immunoassay. The microtiter plate provided in this kit has been pre-coated

with an antibody specific to Kallikrein 7 (KLK7). Standards or samples are then added to the appropriate microtiter plate wells with a biotin-conjugated antibody specific to Kallikrein 7 (KLK7). Next, Avidin conjugated to Horseradish Peroxidase (HRP) is added to each microplate well and incubated. After TMB substrate solution is added, only those wells that contain Kallikrein 7 (KLK7), biotin-conjugated antibody and enzyme-conjugated Avidin will exhibit a change in color. The enzyme-substrate reaction is terminated by the addition of sulphuric acid solution and the color change is measured spectrophotometrically at a wavelength of  $450\text{nm} \pm 10\text{nm}$ . The concentration of Kallikrein 7 (KLK7) in the samples is then determined by comparing the O.D. of the samples to the standard curve.



All products are for RESEARCH USE ONLY. Not for diagnostic & therapeutic purposes!