

# ELISA Kit for Vitamin B6 (VB6)

Catalog No: tcue1689



## Available Sizes

Size: 96T



## Specifications

### Research Area:

Nutrition metabolism;Hormone metabolism;

### Species Reactivity:

Pan-species (General)

### Sample Type:

serum, plasma and other biological fluids

### Sensitivity:

The minimum detectable dose of this kit is typically less than 1.42ng/mL

### Detection Range:

3.70-300ng/mL

### Assay Time:

2h

### Detection Method:

Enzyme-linked immunosorbent assay for Antigen Detection.

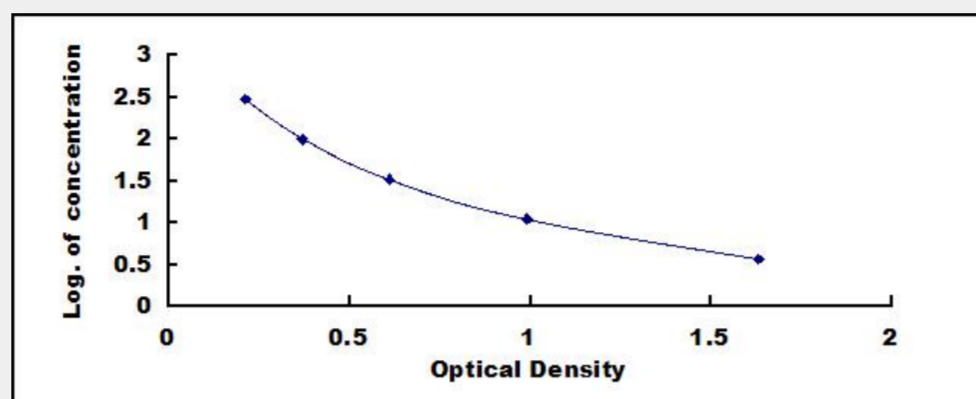
### Tested Application:

ELISA

## Test Principle

This assay employs the competitive inhibition enzyme immunoassay technique. A monoclonal antibody specific to Vitamin B6 (VB6) has been pre-coated onto a microplate. A competitive inhibition reaction is launched between biotin labeled Vitamin B6 (VB6) and unlabeled Vitamin B6 (VB6) (Standards or samples) with the pre-coated antibody specific to Vitamin B6 (VB6). After incubation the unbound conjugate is washed off. Next, avidin conjugated to Horseradish Peroxidase (HRP) is added to each microplate well and incubated. The amount of bound HRP conjugate is reverse proportional to the concentration of Vitamin B6 (VB6) in the sample. After

addition of the substrate solution, the intensity of color developed is reverse proportional to the concentration of Vitamin B6 (VB6) in the sample.



All products are for RESEARCH USE ONLY. Not for diagnostic & therapeutic purposes!