

Polyclonal Antibody to Calpain 1, Large Subunit (CAPN1)

Catalog No: tcua3977



Available Sizes

Size: 20ul

Size: 100ul

Size: 200ul



Specifications

Application:

WB; IHC; ICC; IP.

Species Reactivity:

Rattus norvegicus (Rat)

Host Species:

Rabbit

Immunogen / Amino acids:

Polyclonal Antibody to Calpain 1, Large Subunit (CAPN1)

Conjugation:

Unconjugated

Clonality:

Polyclonal

Form:

Liquid

Storage Buffer:

0.01M PBS, pH7.4, containing 0.05% Proclin-300, 50% glycerol.

Recommended Dilution:

Western blotting: 0.5-2ug/ml

Immunocytochemistry in formalin fixed cells: 5-20ug/ml

Immunohistochemistry in formalin fixed frozen section: 5-20ug/ml

Immunohistochemistry in paraffin section: 5-20ug/ml

Enzyme-linked

Alternative Names:

PIG30; CANPL1; MuCANP; MuCL; Calpain-1 Catalytic Subunit; Calcium-Dependent Protease 1; Calcium-activated neutral proteinase 1; Calpain mu-type; Micromolar-calpain

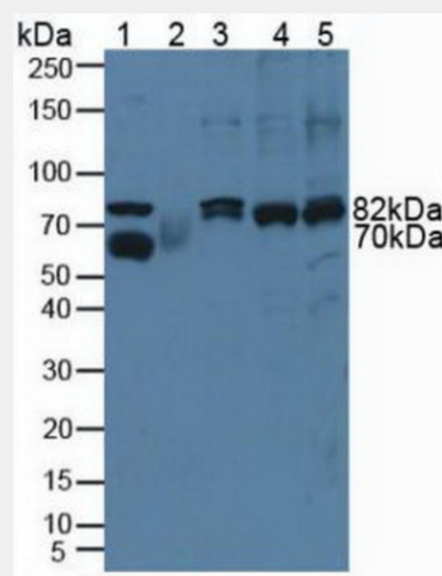


Figure. Western Blot; Sample: Lane1: Rat Serum; Lane2: Rat Testis Tissue; Lane3: Human HeLa Cells; Lane4: Human A431 Cells; Lane5: Human Jurkat Cells.)

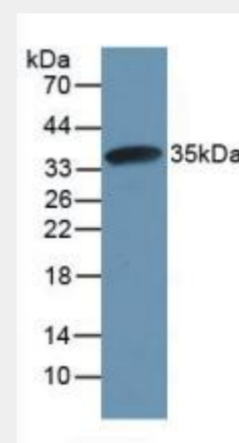


Figure. Western Blot; Sample: Recombinant CAPN1, Rat.)

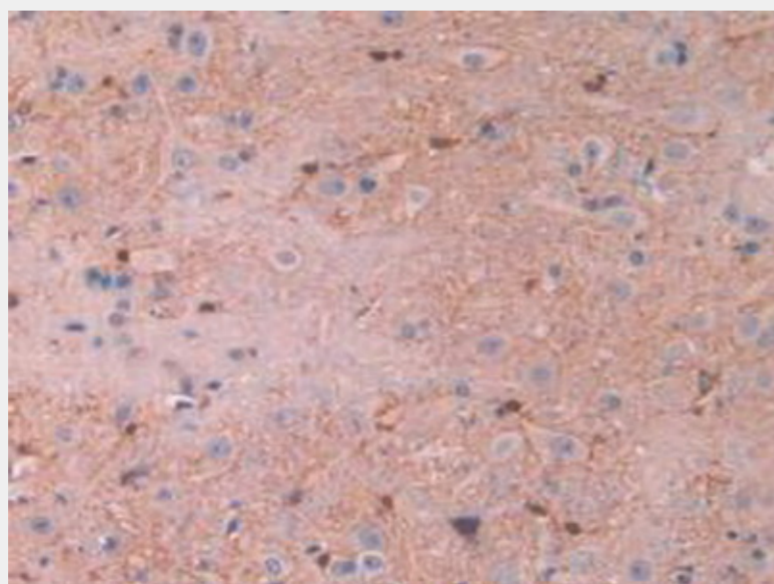


Figure. DAB staining on IHC-P; Samples: Rat Spinal Cord Tissue.)

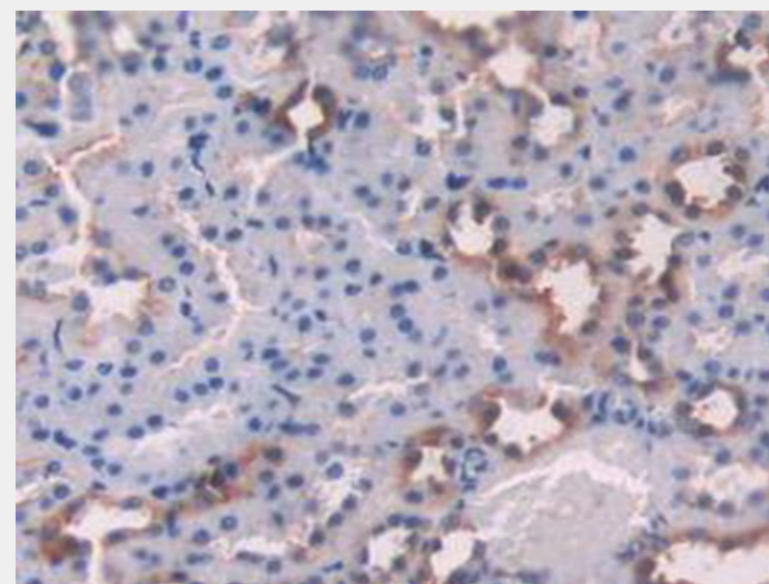


Figure. DAB staining on IHC-P; Samples: Rat Tissue.)

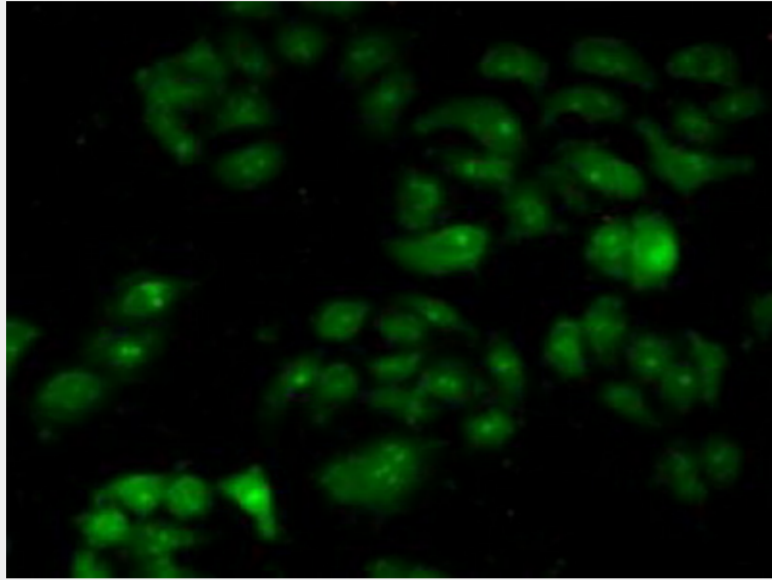


Figure. FITC staining on IHC-P; Samples: Human HeLa Cells.)

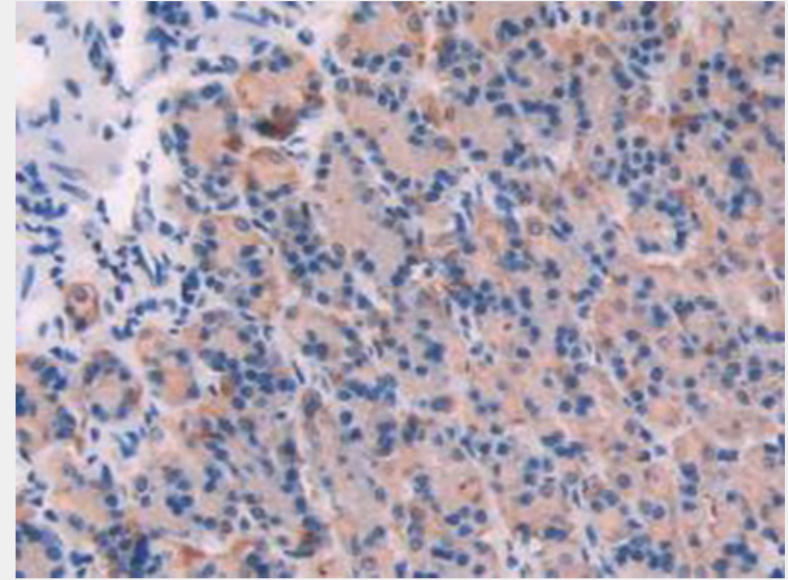


Figure. DAB staining on IHC-P; Samples: Rat Tissue.)

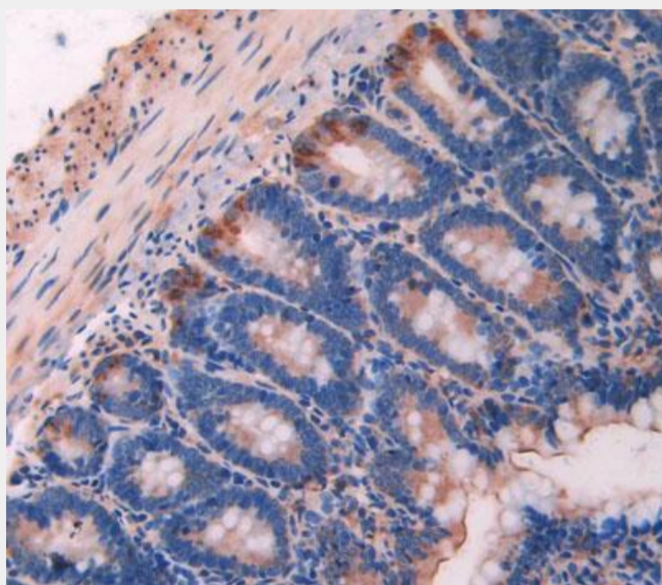


Figure. DAB staining on IHC-P; Samples: Rat Intestine Tissue.)

All products are for RESEARCH USE ONLY. Not for diagnostic & therapeutic purposes!