

# ELISA Kit for Collagen Type I (COL1)

Catalog No: tcue1687



## Available Sizes

---

**Size:** 96T

---



## Specifications

---

**Research Area:**

Metabolic pathway;Developmental science;Bone metabolism;

---

**Species Reactivity:**

Mus musculus (Mouse)

---

**Sample Type:**

serum, plasma, tissue homogenates and other biological fluids

---

**Sensitivity:**

The minimum detectable dose of this kit is typically less than 0.118ng/mL

---

**Detection Range:**

0.312-20ng/mL

---

**Assay Time:**

3h

---

**Detection Method:**

Enzyme-linked immunosorbent assay for Antigen Detection.

---

**Tested Application:**

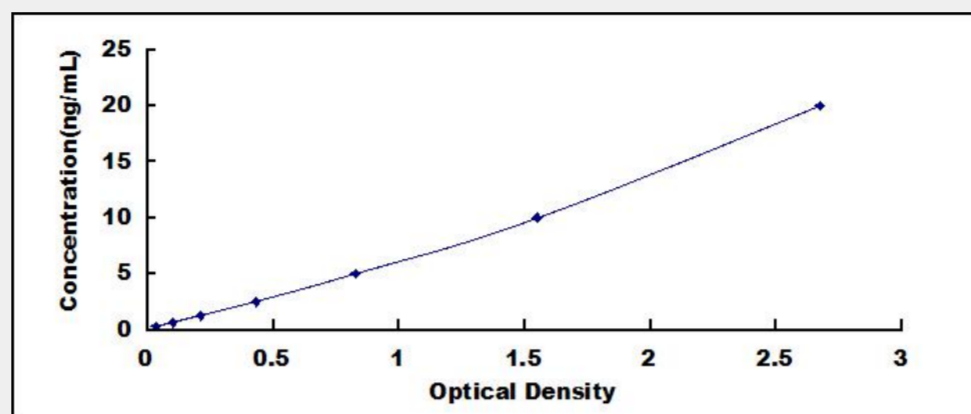
ELISA

---

## Test Principle

The test principle applied in this kit is Sandwich enzyme immunoassay. The microtiter plate provided in this kit has been pre-coated with an antibody specific to Collagen Type I (COL1). Standards or samples are then added to the appropriate microtiter plate wells with a biotin-conjugated antibody specific to Collagen Type I (COL1). Next, Avidin conjugated to Horseradish Peroxidase (HRP) is added to each microplate well and incubated. After TMB substrate solution is added, only those wells that contain Collagen Type I (COL1), biotin-conjugated antibody and enzyme-conjugated Avidin will exhibit a change in color. The enzyme-substrate reaction is

terminated by the addition of sulphuric acid solution and the color change is measured spectrophotometrically at a wavelength of  $450\text{nm} \pm 10\text{nm}$ . The concentration of Collagen Type I (COL1) in the samples is then determined by comparing the O.D. of the samples to the standard curve.



All products are for RESEARCH USE ONLY. Not for diagnostic & therapeutic purposes!