

ELISA Kit for Leukotriene B4 (LTB4)

Catalog No: tcue1667



Available Sizes

Size: 96T



Specifications

Research Area:

Metabolic pathway; Infection immunity; Endocrinology; Hormone metabolism;

Species Reactivity:

Pan-species (General)

Sample Type:

serum, plasma, tissue homogenates, cell culture supernates and other biological fluids

Sensitivity:

The minimum detectable dose of this kit is typically less than 90.4pg/mL

Detection Range:

246.9-20,000pg/mL

Assay Time:

2h

Detection Method:

Enzyme-linked immunosorbent assay for Antigen Detection.

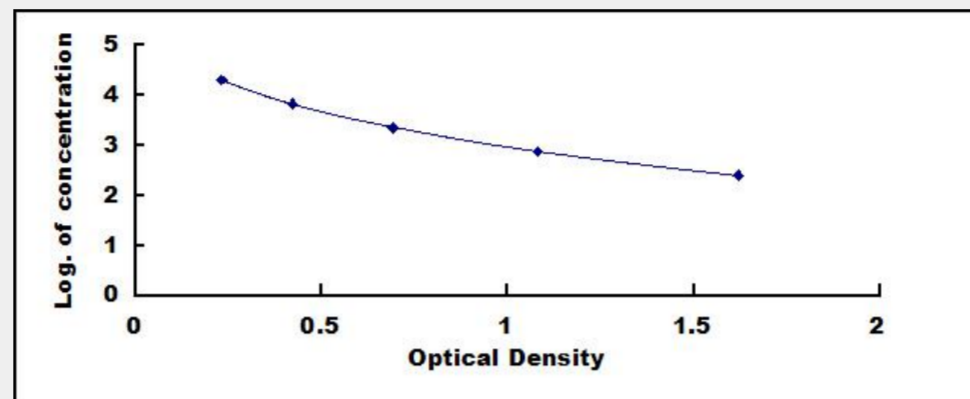
Tested Application:

ELISA

Test Principle

This assay employs the competitive inhibition enzyme immunoassay technique. A monoclonal antibody specific to Leukotriene B4 (LTB4) has been pre-coated onto a microplate. A competitive inhibition reaction is launched between biotin labeled Leukotriene B4 (LTB4) and unlabeled Leukotriene B4 (LTB4) (Standards or samples) with the pre-coated antibody specific to Leukotriene B4 (LTB4). After incubation the unbound conjugate is washed off. Next, avidin conjugated to Horseradish Peroxidase (HRP) is added to each microplate well and incubated. The amount of bound HRP conjugate is reverse proportional to the concentration of Leukotriene B4

(LTB4) in the sample. After addition of the substrate solution, the intensity of color developed is reverse proportional to the concentration of Leukotriene B4 (LTB4) in the sample.



All products are for RESEARCH USE ONLY. Not for diagnostic & therapeutic purposes!