

ELISA Kit for Corticotropin Releasing Hormone (CRH)

Catalog No: tcue1407



Available Sizes

Size: 96T



Specifications

Research Area:

Endocrinology;Cardiovascular biology;Neuro science;Hormone metabolism;

Species Reactivity:

Homo sapiens (Human)

Sample Type:

serum, plasma and other biological fluids

Sensitivity:

The minimum detectable dose of this kit is typically less than 5.19pg/mL

Detection Range:

12.35-1000pg/mL

Assay Time:

3Hours

Detection Method:

Competitive inhibition enzyme immunoassay technique.

Tested Application:

ELISA

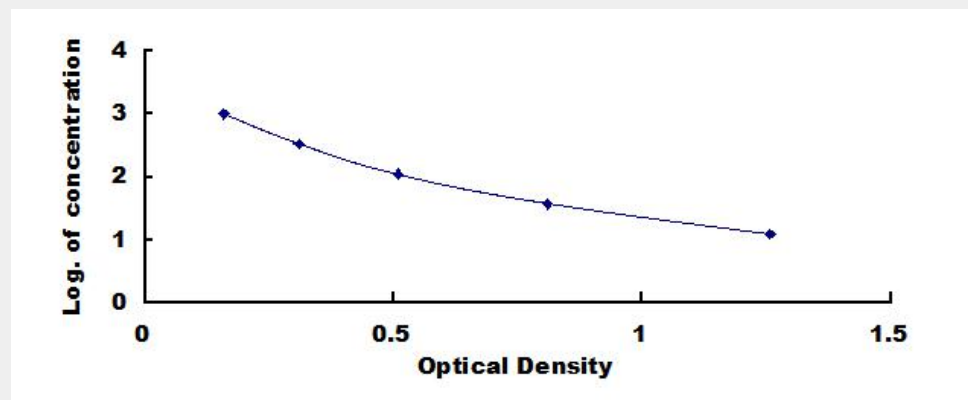
SwissProt:

P06850

Test Principle

This assay employs the competitive inhibition enzyme immunoassay technique. A monoclonal antibody specific to Corticotropin

Releasing Hormone (CRH) has been pre-coated onto a microplate. A competitive inhibition reaction is launched between biotin labeled Corticotropin Releasing Hormone (CRH) and unlabeled Corticotropin Releasing Hormone (CRH) (Standards or samples) with the pre-coated antibody specific to Corticotropin Releasing Hormone (CRH). After incubation the unbound conjugate is washed off. Next, avidin conjugated to Horseradish Peroxidase (HRP) is added to each microplate well and incubated. The amount of bound HRP conjugate is reverse proportional to the concentration of Corticotropin Releasing Hormone (CRH) in the sample. After addition of the substrate solution, the intensity of color developed is reverse proportional to the concentration of Corticotropin Releasing Hormone (CRH) in the sample.



All products are for RESEARCH USE ONLY. Not for diagnostic & therapeutic purposes!