

ELISA Kit for Growth Hormone Releasing Hormone (GHRH)

Catalog No: tcue1388



Available Sizes

Size: 96T



Specifications

Research Area:

Endocrinology;Hormone metabolism;

Species Reactivity:

Sus scrofa; Porcine (Pig)

Sample Type:

Serum, plasma and other biological fluids.

Sensitivity:

The minimum detectable dose of this kit is typically less than 5.22pg/mL

Detection Range:

12.35-1000pg/mL

Assay Time:

2h

Detection Method:

Enzyme-linked immunosorbent assay for Antigen Detection.

Tested Application:

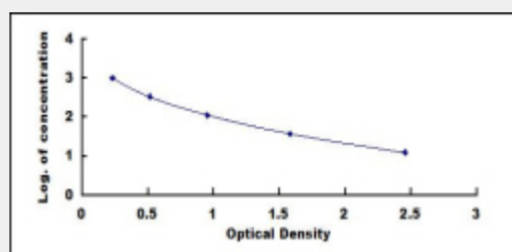
ELISA

SwissProt:

E0Y439

Test Principle

This assay employs the competitive inhibition enzyme immunoassay technique. A monoclonal antibody specific to Growth Hormone Releasing Hormone (GHRH) has been pre-coated onto a microplate. A competitive inhibition reaction is launched between biotin labeled Growth Hormone Releasing Hormone (GHRH) and unlabeled Growth Hormone Releasing Hormone (GHRH) (Standards or samples) with the pre-coated antibody specific to Growth Hormone Releasing Hormone (GHRH). After incubation the unbound conjugate is washed off. Next, avidin conjugated to Horseradish Peroxidase (HRP) is added to each microplate well and incubated. The amount of bound HRP conjugate is reverse proportional to the concentration of Growth Hormone Releasing Hormone (GHRH) in the sample. After addition of the substrate solution, the intensity of color developed is reverse proportional to the concentration of Growth Hormone Releasing Hormone (GHRH) in the sample.



All products are for RESEARCH USE ONLY. Not for diagnostic & therapeutic purposes!